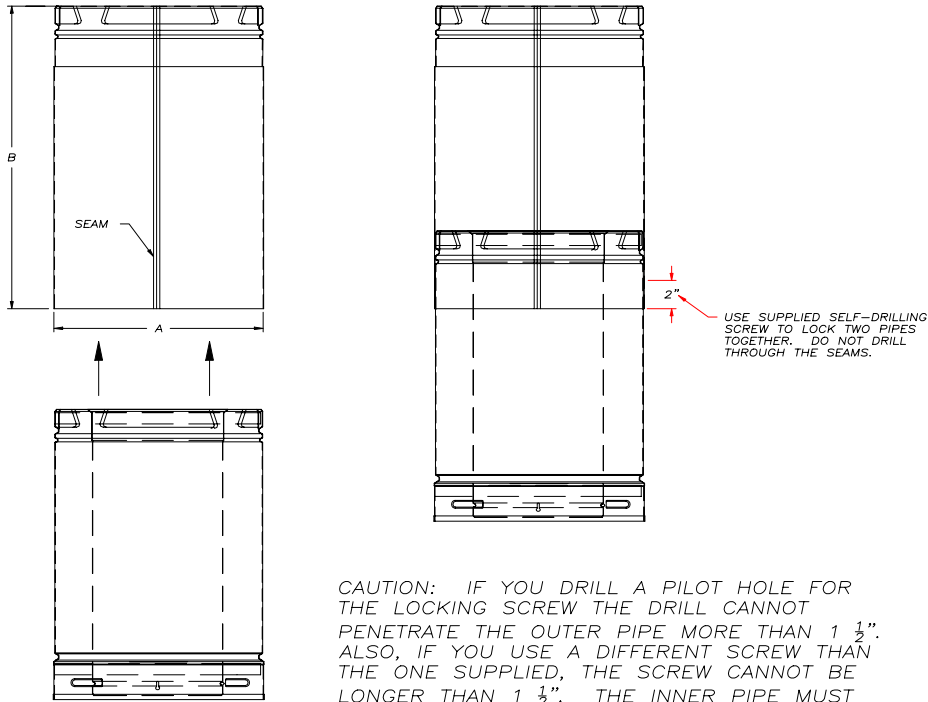


INSTALLATION INSTRUCTION FOR AMERIVENT DIRECT ADJUSTABLE PIPES

INSERT MALE END OF STANDARD PIPE INTO OPEN END OF THE ADJUSTABLE PIPE.
TELESCOPING FROM 3" TO (5" for 7A's, 10" for 12A's, 14" for 16A's, & 24" for 26A's).

CODE NO.	SIZE	A	B Length
4D7A (AB), 4D12A (AB), 4D16A (AB), 4D26A (AB)	4" x 6 5/8"	6.7"	7", 12", 16", & 26"
5D7A (AB), 5D12A (AB), 5D16A (AB), 5D26A (AB)	5" x 8"	8.12"	7", 12", 16", & 26"

LOCK THE TWO PIPES TOGETHER AS SHOWN IN THE ILLUSTRATION BELOW.



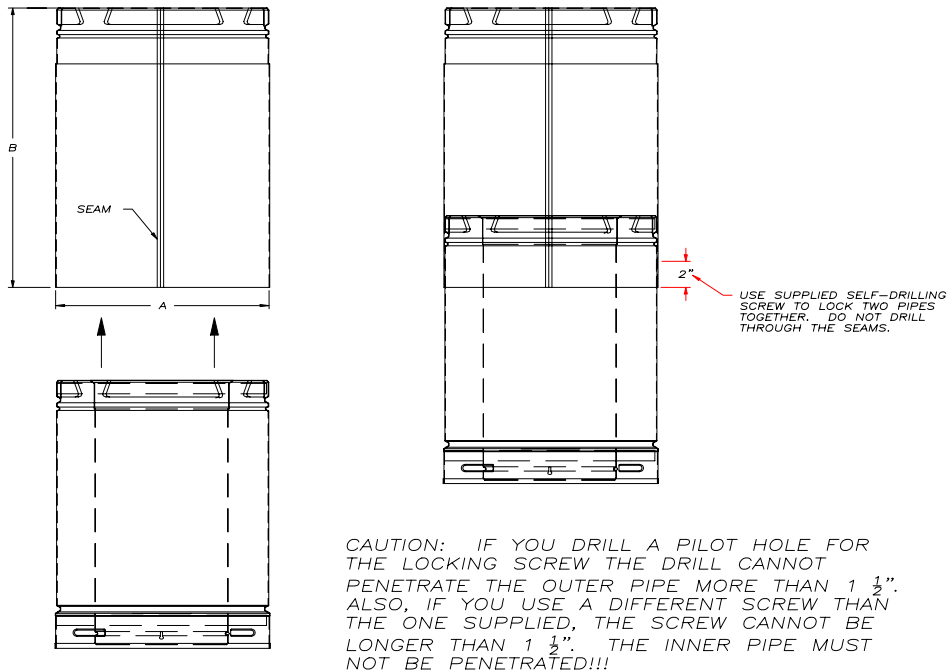
Prod. # 804265 (D)

INSTALLATION INSTRUCTION FOR AMERIVENT DIRECT ADJUSTABLE PIPES

INSERT MALE END OF STANDARD PIPE INTO OPEN END OF THE ADJUSTABLE PIPE.
TELESCOPING FROM 3" TO (5" for 7A's, 10" for 12A's, 14" for 16A's, & 24" for 26A's).

CODE NO.	SIZE	A	B Length
4D7A (AB), 4D12A (AB), 4D16A (AB), 4D26A (AB)	4" x 6 5/8"	6.7"	7", 12", 16", & 26"
5D7A (AB), 5D12A (AB), 5D16A (AB), 5D26A (AB)	5" x 8"	8.12"	7", 12", 16", & 26"

LOCK THE TWO PIPES TOGETHER AS SHOWN IN THE ILLUSTRATION BELOW.



CAUTION: IF YOU DRILL A PILOT HOLE FOR THE LOCKING SCREW THE DRILL CANNOT PENETRATE THE OUTER PIPE MORE THAN 1 1/2". ALSO, IF YOU USE A DIFFERENT SCREW THAN THE ONE SUPPLIED, THE SCREW CANNOT BE LONGER THAN 1 1/2". THE INNER PIPE MUST NOT BE PENETRATED!!!