

Hearth Catalog

All-Fuel Chimney

Double Wall Stovepipe

Direct Vent

Triple Wall Chimney

Pellet Vent



TABLE OF CONTENTS

TLC All-Fuel Chimney

Technical Information	3
Offset Chart	7
Product Descriptions and Dimensions	4-19
Typical Installations	20

Model HS/HSS Chimney

Technical Information	21-22
Offset Chart	23
Product Descriptions and Dimensions	23-34
Chimney Kits	33
Installation Information	34

Direct Vent

Technical Information	35-
Offset Chart	37
Product Descriptions and Dimensions	36-46
Chimney Conversion Kits	45
Termination Kits	46
Typical Installations	47

Ultimate Pellet Pipe

Technical Information	48
Product Descriptions and Dimensions	49-58
Pellet Pipe Kits	59

Model DCC Double Wall Stovepipe

Technical Information	60
Offset Chart	62
Product Descriptions and Dimensions	61-64
Typical Installations	65

Ultimate Stovepipe

Technical Information	66
Offset Chart	73
Product Descriptions and Dimensions	67-73
Typical Installations	74



Model TLC All-Fuel Chimney offers the best in factory-built chimney design by providing superior performance, durability and safety.

Certification & Applications



Model TLC is safety-tested and listed to applicable UL safety standards for chimneys serving solid-fuel and liquid-fuel appliances. This includes UL 103. This chimney system is designed for use on appliances that use solid, liquid or gas fuels under natural draft conditions.

Allowable flue gas temperatures are:

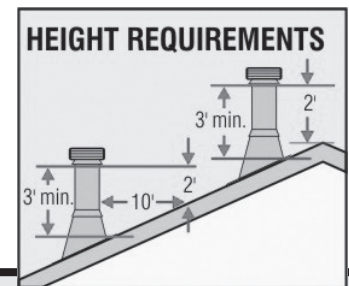
	Type HT 5" to 8"	Non-HT 10" to 14"
Maximum Continuous	1000°F	1000°F
Brief Forced Firing (1 hr)	1400°F	1400°F
Creosote Burn-Out (10min)	2100°F	1700°F

Enhanced Features

Model TLC offers the best in corrosion-resistance. Both the inner liner and outer casings are constructed of 304 stainless steel. Embossed couplers do not allow moisture to penetrate the chimney's outer wall. Sections simply twist-lock together and are easily secured with Locking Bands. The Model TLC product line features deluxe chimney support components that will enhance any installation. Black trims are used to embellish the chimney support component parts that may be installed inside the home.

Height Requirements

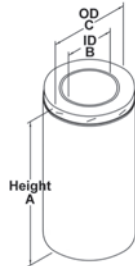
The chimney must extend at least three feet above the highest point where it passes through the roof surface and at least two feet higher than any part of the building within a horizontal distance of ten feet.



Sizes	5" to 14"
Inner Liner (Flue)	5" to 8" - Inner and Outer 0.016" thickness
Outer Casing	10" to 14" - Inner and Outer 0.015" thickness
Insulation	The 1" space between the inner/outer walls is packed with mineral wool fiber insulation to provide superior insulating qualities in a slim-line design
Airspace Clearance to Combustibles	2"



CHIMNEY LENGTHS



Chimney Lengths

- Slim, advanced design of the 5" through 8" diameters allow for installation between 16" centers and still provide 2" clearance from combustible material
- Secure twist-lock design couples chimney sections together with just a 1/8 turn
- The included Locking bands secure joints
- 5" - 8" sections overlap by 1 1/8", 10" - 14" sections overlap by 1 1/4"
- Chimneys are sized according to the inner diameter and are available in 5" through 14"
- The outside diameter is 2" larger than the inside diameter

Stainless Steel Locking Bands



PART #	SIZE	A
5TLCLB	5"	7"
6TLCLB	6"	8"
7TLCLB	7"	9"
8TLCLB	8"	10"
10TLCLB	10"	12"
12TLCLB	12"	14"
14TLCLB	14"	16"

- Locking bands are used at joints for safety and stability
- Locking band flanges engage the curl in each end of the adjoining sections, holding them securely together.

TLC Adjustable Lengths

- Used to adjust the system to an exact overall length
- Used between elbows for a required offset distance
- All stainless construction with telescoping design
- Locking band included
- Length adjusts from 2" - 9 1/2"
- 5", 6", 7" & 8" Sizes

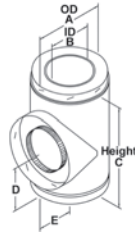


PART #	SIZE	HEIGHT A	INSIDE B	OUTSIDE C
5TLC6	5"	6"	5"	7"
5TLC12	5"	12"	5"	7"
5TLC18	5"	18"	5"	7"
5TLC24	5"	24"	5"	7"
5TLC36	5"	36"	5"	7"
6TLC6	6"	6"	6"	8"
6TLC12	6"	12"	6"	8"
6TLC18	6"	18"	6"	8"
6TLC24	6"	24"	6"	8"
6TLC36	6"	36"	6"	8"
6TLC48	6"	48"	6"	8"
7TLC6	7"	6"	7"	9"
7TLC12	7"	12"	7"	9"
7TLC18	7"	18"	7"	9"
7TLC24	7"	24"	7"	9"
7TLC36	7"	36"	7"	9"
7TLC48	7"	48"	7"	9"
8TLC6	8"	6"	8"	10"
8TLC12	8"	12"	8"	10"
8TLC18	8"	18"	8"	10"
8TLC24	8"	24"	8"	10"
8TLC36	8"	36"	8"	10"
8TLC48	8"	48"	8"	10"
10TLC6	10"	6"	10"	12"
10TLC9	10"	9"	10"	12"
10TLC12	10"	12"	10"	12"
10TLC18	10"	18"	10"	12"
10TLC24	10"	24"	10"	12"
10TLC36	10"	36"	10"	12"
12TLC6	12"	6"	12"	14"
12TLC9	12"	9"	12"	14"
12TLC12	12"	12"	12"	14"
12TLC18	12"	18"	12"	14"
12TLC24	12"	24"	12"	14"
12TLC36	12"	36"	12"	14"
14TLC6	14"	6"	14"	16"
14TLC9	14"	9"	14"	16"
14TLC12	14"	12"	14"	16"
14TLC18	14"	18"	14"	16"
14TLC24	14"	24"	14"	16"
14TLC36	14"	36"	14"	16"

PART #	SIZE	HEIGHT A	INSIDE B	OUTSIDE C
5TLCAL12	5"	12"	5"	7 5/16"
6TLCAL12	6"	12"	6"	8 5/16"
7TLCAL12	7"	12"	7"	9 5/16"
8TLCAL12	8"	22"	8"	10 5/16"



TEE COMPONENTS



Insulated Tee with Tee Cap

- Used for through-the-wall installation with a wall support (sold separately)
- A chimney length is required to pass safely through a wall

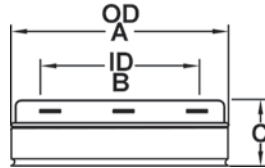
PART #	SIZE	OD-A	ID-B	C	D	E
5TLCT	5"	7"	5"	10 1/2"	5"	5"
6TLCT	6"	8"	6"	11 1/2"	5 5/8"	5 3/4"
7TLCT	7"	9"	7"	12 1/4"	6 1/4"	6 3/16"
8TLCT	8"	10"	8"	13 3/8"	6 5/8"	6 1/2"
10TLCT	10"	12"	10"	16 3/4"	8 3/8"	8 3/8"
12TLCT	12"	14"	12"	18 3/4"	9 3/8"	9 3/8"
14TLCT	14"	16"	14"	20 3/4"	10 3/8"	10 3/8"

Includes the following:

One locking band

5" to 8" sizes have an uninsulated (single-wall) twist-lock tee cap.

10" to 14" sizes have an insulated press fit tee cap.



Insulated Tee Cap

- Permits typical 2" airspace clearance to combustibles
- 5" to 8" sizes are twist-lock
- 10" to 14" sizes are press-fit design
- 5" to 8" sizes cannot be used with the Adjustable Wall Support

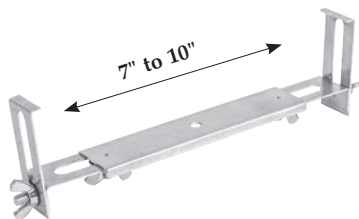
PART #	SIZE	OD A	ID B	C
5TLCITP	5"	7"	5"	2 7/8"
6TLCITP	6"	8"	6"	2 7/8"
7TLCITP	7"	9"	7"	2 7/8"
8TLCITP	8"	10"	8"	2 7/8"
10TLCITP	10"	12"	10"	2 7/8"
12TLCITP	12"	14"	12"	2 7/8"
14TLCITP	14"	16"	14"	2 7/8"



Non-Twist-Lock Insulated Tee Cap

- 5" to 8" sizes

PART #	SIZE
5TLCITC	5"
6TLCITC	6"
7TLCITC	7"
8TLCITC	8"

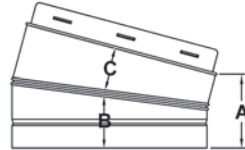


Universal Tee Cap Retainer

- Secures tee cap on the bottom side of insulated tee
- Adjusts to fit chimney diameters 5"-8"
- Used when support is above insulated tee

PART #	SIZE
TLCTCR	5" - 8"

ELBOWS
15° Elbow Kits

30° Elbow Kits

15° and 30° Elbow Kits

- The insulated elbow is used when offset is required
- Locking bands must be used on all elbows
- A maximum of 6' is allowable between elbows
- Elbow is fully insulated and can be used with the same 2" clearance as chimney lengths
- Elbow support must be used with all offset installations and will support 15' of chimney
- Elbows do not have twist-locking ridges, so they can be rotated to attain optimum positioning and allow chimney to return to correct vertical alignment prior to installing locking bands
- May not be used outdoors

15° Elbow Kits

PART #	SIZE	A	B	C
5TLCEK15	5"	3 3/8"	2 7/16"	1 15/16"
6TLCEK15	6"	3 3/8"	2 1/2"	2"
7TLCEK15	7"	3 3/8"	2 9/16"	2 1/16"
8TLCEK15	8"	3 3/8"	2 5/8"	2 1/8"
10TLCEK15	10"	2 1/2"	5 1/2"	NA
12TLCEK15	12"	2 1/4"	5 3/4"	NA
14TLCEK15	14"	2"	6"	NA

30° Elbow Kits

5TLCEK30	5"	2 3/4"	2 9/16"	2 9/16"
6TLCEK30	6"	3 1/4"	3 1/16"	2 9/16"
7TLCEK30	7"	3 3/4"	3 7/16"	2 15/16"
8TLCEK30	8"	4 1/4"	3 7/8"	3 3/8"
10TLCEK30	10"	5"	3 7/8"	3 1/2"
12TLCEK30	12"	4"	4 1/4"	4"
14TLCEK30	14"	4 1/4"	4 1/4"	4 1/4"

Elbow kits include:

2 elbows (Exception: 12" and 14" sizes include four 15° elbows assembled into two 30° elbows)

2 locking bands (Exception: 12" and 14" sizes include four locking bands)

1 elbow support

All hardware

CHIMNEY OFFSET CHARTS

It may be necessary to offset the chimney in order to clear a joist or an obstacle. The Offset Charts will assist you in selecting the proper combination of elbow angle and chimney length(s) that will provide the necessary offset within an available height.

1. Select the column with the proper chimney diameter of your system.
2. Determine the distance of the offset required by dropping a plumb line for an accurate measurement. The offset is measured at the chimney centerline, as per the "A" Offset measurement in the diagram below.
3. On the chart, find the predetermined distance (under the "A" column) required for the 15° elbow. For greater offset, use the 30° offset chart.
4. After finding the offset, look at the "B" (height) measurement in the chart to find the specified height. The appropriate "chimney lengths" required in between elbows is found in the left-hand side column of each chart.

NOTE:

- Model TLC chimneys are limited to offsets not exceeding 30° from vertical
- Combining elbows for greater angle is not permitted
- One pair of (two) elbows may be used for interior installation only
- Never install an elbow in a joist area. Chimney sections must pass vertically through framed joist areas.
- Locking Bands must be used at all chimney joints
- Each elbow resupport will support 15' of chimney
- The maximum length of chimney allowed between elbows is 6'

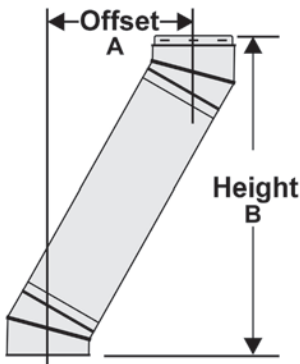


15° OFFSET CHART

Chimney Length	5" Diameter		6" Diameter		7" Diameter		8" Diameter		10" Diameter		12" Diameter		14" Diameter	
	A	B	A	B	A	B	A	B	A	B	A	B	A	B
"none"	1 1/2"	9"	1 1/8"	10"	1 1/8"	10 1/4"	1 1/4"	10 3/8"	1 1/4"	9 1/2"	1"	7 3/4"	1"	8 1/4"
6"	2 1/18"	13 1/2"	2 3/8"	14 1/4"	2 3/8"	15"	2 1/2"	15 5/8"	2 3/4"	14"	2 1/4"	12 1/4"	2 1/4"	12 3/4"
12"	4"	19 1/8"	4"	20 1/2"	4 1/16"	20 3/4"	4 1/8"	21"	4"	19 3/4"	3 3/4"	18"	3 3/4"	18 3/4"
18"	5 1/2"	25"	5 1/2"	26 1/4"	5 1/2"	26 1/2"	5 5/8"	26 3/4"	5 1/2"	25 5/8"	5 3/8"	24"	5 3/8"	24 3/8"
24"	7 1/2"	30 1/2"	7"	32"	7 1/16"	32 1/4"	7 1/8"	32 1/2"	7 1/8"	31 3/8"	7"	29 3/4"	7"	30 1/4"
36"	10 1/8"	42"	10 1/4"	43 5/8"	10 1/4"	44"	10 1/4"	44 1/8"	10 1/4"	43"	10"	41 1/4"	10"	41 3/4"
6"+36"	11 1/4"	48 1/4"	11 3/8"	48 3/8"	11 1/2"	48 5/8"	11 1/2"	48 7/8"	11 3/4"	47 1/2"	11 1/4"	45 7/8"	11 1/4"	46 1/4"
12"+36"	12 3/4"	54"	13"	54 1/8"	13"	54 3/8"	13"	54 5/8"	13"	53 1/4"	12 3/4"	51 5/8"	12 3/4"	52 1/4"
18"+36"	14 3/8"	59 3/4"	14 1/2"	60"	14 1/2"	60 1/8"	14 5/8"	60 3/8"	14 1/2"	59 1/8"	14 1/4"	57 1/2"	14 3/8"	57 7/8"
24"+36"	16"	65 1/2"	16 1/8"	65 3/4"	16 1/8"	66"	16 1/8"	66 1/4"	16 1/8"	64 7/8"	15 7/8"	63 1/4"	16"	63 3/4"
12"+24"+36"	19"	76 1/4"	19"	76 1/4"	19"	76 1/2"	19"	76 3/4"	18 7/8"	75 1/8"	18 5/8"	73 5/8"	18 3/4"	74 1/4"
48"	13 5/8"	54 1/8"	13 1/4"	55 1/8"	13 1/4"	55 3/8"	13 3/8"	55 1/2"						

30° OFFSET CHART

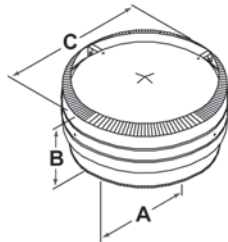
Chimney Length	5" Diameter		6" Diameter		7" Diameter		8" Diameter		10" Diameter		12" Diameter		14" Diameter	
	A	B	A	B	A	B	A	B	A	B	A	B	A	B
none	3"	10"	2 3/4"	11 5/8"	3 1/8"	13"	3 1/2"	14 1/2"	4"	15 1/4"	4"	14 1/2"	4 1/4"	15 5/8"
6"	5 1/4"	14"	5 1/4"	15 7/8"	5 5/8"	17 1/4"	6"	18 3/8"	6 1/4"	19 1/4"	6 1/4"	18 3/4"	6 1/2"	19 3/4"
12"	9"	19 1/4"	8 1/4"	21"	8 5/8"	22 3/8"	9"	24"	9 1/4"	24 1/2"	9 1/4"	24"	9 1/2"	25"
18"	11 1/4"	24 1/2"	11 1/4"	26 1/4"	11 5/8"	27 5/8"	12"	29 1/8"	12 1/4"	29 3/4"	12 1/4"	29"	12 1/2"	30 1/8"
24"	14 1/4"	29 3/4"	14 1/4"	31 3/8"	14 5/8"	32 7/8"	15"	32 3/8"	15 1/4"	34 3/4"	15 1/4"	34 1/4"	15 1/2"	35 1/4"
36"	20"	39 3/4"	20 1/4"	41 7/8"	20 5/8"	43 1/4"	21"	44 3/4"	21 1/4"	45 1/4"	21 1/4"	44 3/4"	21 1/2"	45 3/4"
6"+36"	21 7/8"	44 1/2"	22 5/8"	46"	23"	47 1/2"	23 1/2"	49"	23 1/2"	49 1/4"	23 3/4"	49"	23 3/4"	49 7/8"
12"+36"	23 7/8"	50 1/8"	25 5/8"	51 1/4"	26"	52 5/8"	26 1/2"	54 1/8"	26 1/2"	54 1/2"	26 3/4"	54 1/4"	26 3/4"	55 1/8"
18"+36"	27 1/8"	55 1/8"	28 5/8"	56 3/8"	29"	57 3/8"	29 1/2"	59 3/8"	29 1/2"	59 3/4"	29 3/4"	59 1/4"	29 3/4"	60 1/4"
24"+36"	30 3/8"	60 5/8"	31 5/8"	61 5/8"	32"	63"	32"	64 1/2"	32 1/2"	64 3/4"	32 1/2"	64 1/2"	32 3/4"	65 3/8"
12"+24"+36"	37"	69 3/8"	37 1/8"	71"	37 1/2"	72 1/2"	38"	74"	37 3/4"	74"	37 3/4"	74"	38"	74 3/4"
48"	26 3/8"	50 1/2"	26 1/8"	52 1/8"	26 1/2"	53 1/2"								



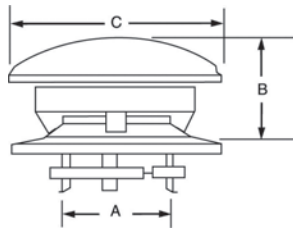
Construction tolerances: +/- 1"

RAIN CAPS

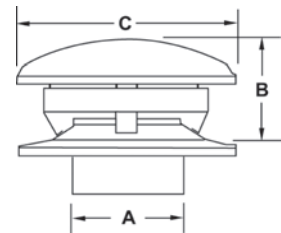
- Protects the system from penetration of rain, debris, birds, and other elements



5" to 8" Model TLCC with Twist-Lock Connection



5" to 8" Model TLCCD with Cinch Band Connection



10" to 14" Model TLCC with Expanding Collar Connection

5" to 8" Model TLCC w/Twist Lock Connection

PART #	SIZE	A	B	C
5TLCC	5"	7"	7 ½"	11 ¼"
6TLCC	6"	8"	7 ½"	11 ¼"
7TLCC	7"	9"	7 ½"	13 ¼"
8TLCC	8"	10"	8"	14 ¼"

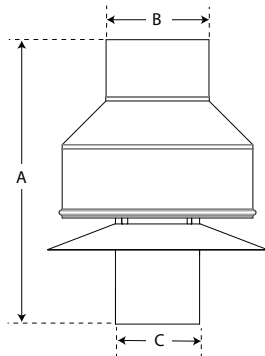
5" to 8" Model TLCCD w/Cinch Band Connection

PART #	SIZE	A	B	C
5TLCCD	5"	7"	5"	10"
6TLCCD	6"	8"	5 ½"	12"
7TLCCD	7"	9"	6 ¼"	14"
8TLCCD	8"	10"	7"	16"

10" to 14" Model TLCC w/Expanding Collar Connection

PART #	SIZE	A	B	C
10TLCC	10"	10"	8 ½"	20"
12TLCC	12"	12"	10"	24"
14TLCC	14"	14"	11 ½"	28"

DIKAPT CHIMNEY CAP

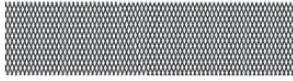


Size	A	B	C	Product No.	Part No.	Pack
5"	17-1/4"	6"	4-3/4"	195802	5DK	1
6"	19-1/4"	7"	5-3/4"	196802	6DK	1
7"	19-1/4"	8"	6-3/4"	197802	7DK	1
8"	19-1/4"	9"	7-3/4"	198802	8DK	1
10"	19-1/4"	10"	9-3/4"	1910802	10DK	1

- Designed to address chimneys with downdraft issues.
- Diverts wind and rain to ensure flue gases are directed outward efficiently & effectively.
- Constructed of 300 Series Stainless Steel for strength & durability.
- Available in 5", 6", 7", 8" & 10" Diameters
- Listed & approved to UL 103HT



SPARK ARRESTERS



Use with TLCC 5" to 14" Caps



Use with Model TLCCD Cap

PART # SIZE

For use with 5" to 14" caps

5TLCSA	5"
6TLCSA	6"
7TLCSA	7"
8TLCSA	8"
10TLCSA	10"
12TLCSA	12"
14TLCSA	14"

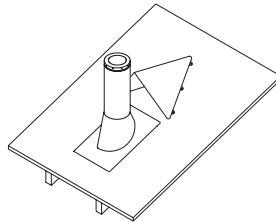
Fits Model TLCCD Round Top only (5", 6", 7", 8")

5TLC SAD	5"
6TLC SAD	6"
7TLC SAD	7"
8TLC SAD	8"

UNIVERSAL SNOW SPLITTER



Universal Snow Splitter



PART # SIZE

TLCSSA	5" to 8"
--------	----------

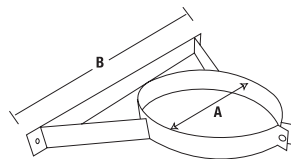
- Designed to deflect snow and ice
- Prevents unnecessary strain and damage to the chimney
- Mounts directly above the chimney pipe
- Easy panel assembly
- Made from durable heavy gauge galvanized steel
- Non-UL listed component

WALL BANDS



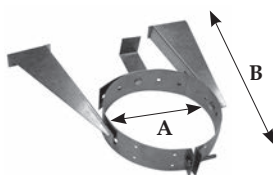
Wall Band

- 5" - 14" sizes
- Stainless Steel construction
- Provides lateral support for the chimney when installed adjacent to a wall
- Maintains the mandatory 2" clearance to combustibles



PART # SIZE A B

5TLCWB	5"	7"	17"
6TLCWB	6"	8"	17"
7TLCWB	7"	9"	17"
8TLCWB	8"	10"	17"
10TLCWB	10"	12"	17"
12TLCWB	12"	14"	18"
14TLCWB	14"	16"	20"



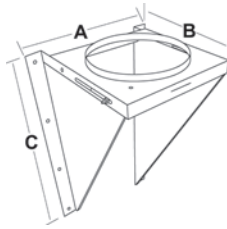
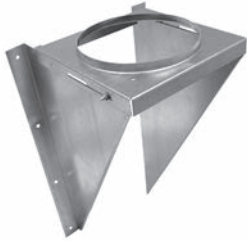
Universal Adjustable Wall Band

PART # SIZE A B

TLCAWB	5" to 8"	7" to 10"	17"
--------	----------	-----------	-----

- Provides lateral support for the chimney when installed along vertical wall
- Provides more than 4" of horizontal adjustability to clear obstructions
- Required at 8' or closer intervals to stabilize chimney

WALL SUPPORT



PART #	ADJUSTABILITY	SIZE	A	B	C
5TLCAWS	4"	5"	12"	10 5/8"	18 1/2"
6TLCAWS	4"	6"	12"	10 5/8"	18 1/2"
7TLCAWS	4"	7"	13"	11 5/8"	20 1/2"
8TLCAWS	4"	8"	14"	12 5/8"	21 1/2"
10TLCAWS	4"	10"	16"	14 5/8"	25 1/4"
12TLCAWS	NONADJUSTABLE	12"	19"	16 1/2"	23"
14TLCAWS	NONADJUSTABLE	14"	21"	18 1/2"	27"

Adjustable Wall Support

- Used to support the chimney on a through-the-wall installation
- 2" to 6" clearance away from wall
- 5" to 8" sizes support between 30' and 74' of chimney, based on size and orientation (See instructions for specific heights)
- 10" to 14" sizes support up to 40' of chimney
- 12" to 14" sizes are nonadjustable supports

Includes the following:

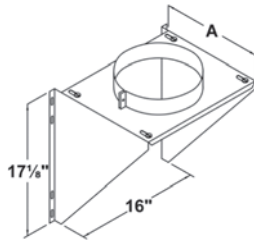
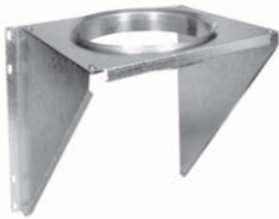
5" to 8" sizes include top plate, side brackets, hardware, non-twist-lock insulated tee cap, and a long L-bracket to hold tee cap in place
 10" to 14" sizes do not include the cap. Use tee cap packaged with tee.



L-Bracket
5" to 8" sizes



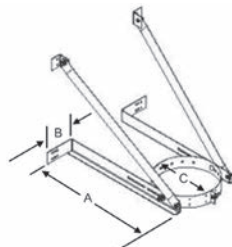
Non-Twist-Lock Insulated Tee Cap
5" to 8" sizes
Also sold separately



PART #	SIZE	A
6TLCIWS	6"	11"
7TLCIWS	7"	12"
8TLCIWS	8"	13"

Intermediate Wall Support

- Used as supplemental support when chimney system height exceeds maximum height allowed by wall support
- Supports an additional 38' of chimney
- Includes top plate, support band, side brackets, and hardware



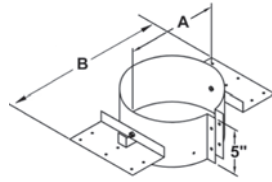
PART #	SIZE	A	B	C
TLCEWS	5"- 8"	22"	5"	7"- 10"

Universal Extended Wall Support

- Designed to support a vertical installation above the insulated tee
- Will support up to 28' of chimney
- Adjusts up to 12" from a vertical wall



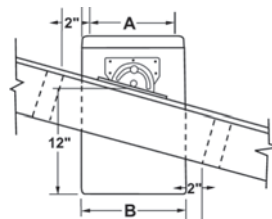
ROOF SUPPORT



PART #	SIZE	A	B
5TLCRS	5"	7"	16"
6TLCRS	6"	8"	17"
7TLCRS	7"	9"	18"
8TLCRS	8"	10"	19"

Adjustable Roof Support

- The roof support may be used on a roof and adjusts to any roof pitch
- It may be used above an offset to support the offset or as a supplemental support when the chimney height exceeds that of the primary support
- Supports a total of 30' of chimney with up to 20' below support
- Does not act as a firestop

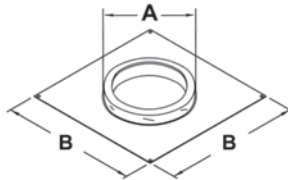
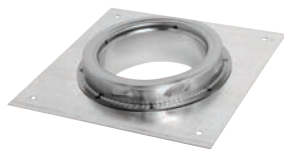


PART #	SIZE	A	B
10TLCRS	10"	10"	12"
12TLCRS	12"	12"	14"
14TLCRS	14"	14"	16"

Adjustable Roof Support with Pipe

- Contains one 18" length of pipe with roof brackets preinstalled (Includes hardware)
- Fits all roof pitches
- Mounts easily on top of roof
- Supports a total of 30' with up to 20' below the support
- Does not act as a firestop

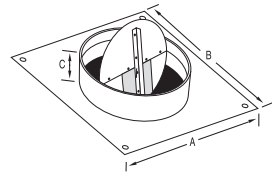
ANCHOR PLATE



PART #	SIZE	A	B
5TLCAP	5"	7"	11 5/8"
6TLCAP	6"	8"	11 5/8"
7TLCAP	7"	9"	11 5/8"
8TLCAP	8"	10"	11 5/8"
10TLCAP	10"	12"	13 1/4"
12TLCAP	12"	14"	15 1/4"
14TLCAP	14"	16"	17 1/4"

Anchor Plate

- Used on masonry fireplaces and with specifically listed zero-clearance fireplaces for direct connection of all-fuel chimney
- 5" to 8" sizes are 14-gauge galvanized base plate, and 10" to 14" sizes are 10-gauge galvanized base plate
- Coupler and inside wall are premium stainless steel



PART #	SIZE	A	B	C
10TLCAPD	10"	16"	16"	5 1/8"
12TLCAPD	12"	18"	18"	5 1/8"
14TLCAPD	14"	20"	20"	5 1/8"

Anchor Plate with Damper

- Used on a masonry fireplace
- Easy operating, built-in damper
- 6' rope wire for easy operation of damper

ROOF BRACES

PART # SIZE

TLCHDRBK 5" to 8"



Heavy Duty Roof Brace Kit

- Provides lateral stability for the chimney system above the roof line
- Required when the chimney extends 5' or more above the roof
- One kit should be used every 5' of chimney
- Includes telescoping legs that adjust from 5' - 9'
- Support band fits chimney sizes 5" - 8"

CEILING SUPPORTS

PART # SIZE A B C

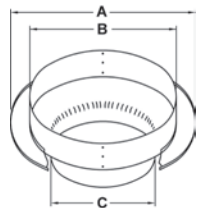
5TLCCSR 5" 16 7/8" 11 3/8" 6 3/7"

6TLCCSR 6" 17 7/8" 12 3/8" 7 3/4"

7TLCCSR 7" 18 7/8" 13 3/8" 8 3/4"

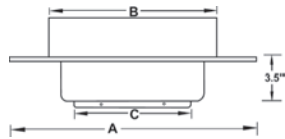
8TLCCSR 8" 19 5/8" 14 3/8" 9 3/4"

10TLCCS 10" 18 1/2" 16 1/4" 10 1/4"

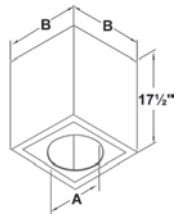


Round Plate Ceiling Support 5" to 8"

- For use in flat ceiling support installations
- Supports a total of 50' of chimney above
- Chimney pipe cannot pass below support
- Matte black finish with ceiling ring to cover rough opening
- Also acts as a firestop
- Must always use stovepipe adapter



Square Plate Ceiling Support 10"



PART # SIZE A B

5TLCCSS 5" 7 1/8" 11"

6TLCCSS 6" 8 1/8" 12"

7TLCCSS 7" 9 1/8" 13"

8TLCCSS 8" 10 1/8" 14"

Cathedral Ceiling Support Box

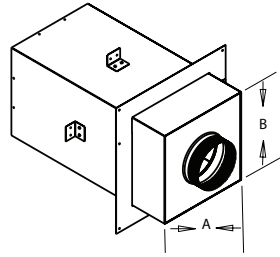
- Used in pitched ceiling support installations
- Supports a total of 38' of chimney with up to 15' below support
- Includes support clamp, allowing chimney pipe to pass below support
- Matte black finish with ceiling trim to cover rough opening
- Also acts as a firestop with use of trim plate
- 12/12 maximum pitch



CEILING SUPPORTS (CONTINUED)



(Not exactly as shown)

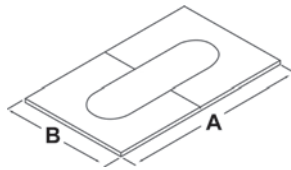
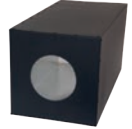


Square Steep Ceiling Support

- Supports up to 20' of Chimney
- Acts as an Attic Insulation Shield
- Designed for installation inside 16" O.C. joists
- Used when installing a chimney in an A-Frame, mobile home, or a narrow roof section

PART #	SIZE	A	B
6TLCCSA	6"	12"	12"
7TLCCSA	7"	13"	13"
8TLCCSA	8"	14"	14"

Includes Box, Adapter, and Brackets



Adjustable Ceiling Plate

- Matte black finish
- Adjusts to multiple ceiling pitches
- Covers 2" space around chimney for attractive finish

PART #	SIZE	A	B
--------	------	---	---

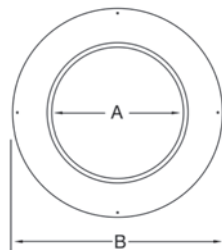
Flat to 6/12 Pitch

5TLCACP	5"	18" to 29"	15 ½"
6TLCACP	6"	19" to 30"	16 ½"
7TLCACP	7"	20" to 31"	17 ½"
8TLCACP	8"	21" to 33"	18 ½"
10TLCACP	10"	23" to 37"	20 ½"
12TLCACP	12"	25" to 41"	22 ½"
14TLCACP	14"	27" to 45"	24 ½"

6/12 TO 12/12 Pitch

5TLCACPT	5"	18" to 29"	15 ½"
6TLCACPT	6"	19" to 30"	16 ½"
7TLCACPT	7"	20" to 31"	17 ½"
8TLCACPT	8"	21" to 33"	18 ½"
10TLCACPT	10"	23" to 37"	20 ½"
12TLCACPT	12"	25" to 41"	22 ½"
14TLCACPT	14"	27" to 45"	24 ½"

TRIM COLLAR



Trim Collar - Matte Black

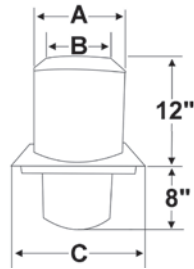
- Used on wall support installations when passing through a noncombustible wall
- Matte black finish for an enhanced handcrafted appearance

PART #	SIZE	A	B
5TLCTC	5"	7 ⅛"	16"
6TLCTC	6"	8 ⅛"	16"
7TLCTC	7"	9 ⅛"	16"
8TLCTC	8"	10 ⅛"	16"

SHIELDS



Attic Insulation Shield

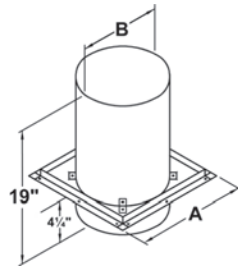


PART #	SIZE	A	B	C
5TLCIS	5"	11"	7 1/8"	13"
6TLCIS	6"	12"	8 1/8"	14"
7TLCIS	7"	13"	9 1/8"	15"
8TLCIS	8"	14"	10 1/8"	16"
10TLCIS	10"	16"	12 1/8"	18"
12TLCIS	12"	18"	14 1/8"	20"
14TLCIS	14"	20"	16 1/8"	22"

- Must be installed where the chimney enters the attic space
- Designed to keep insulation away from the chimney and to maintain the mandatory 2" clearance to combustibles
- When properly framed, also acts as a firestop
- Not to be used for enclosed chimneys passing through attic. Instead, use firestop radiation shield and rafter radiation shield
- Includes a drop-down joist shield

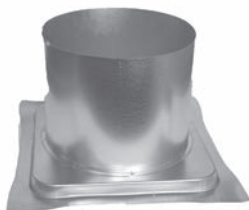


Firestop Radiation Shield

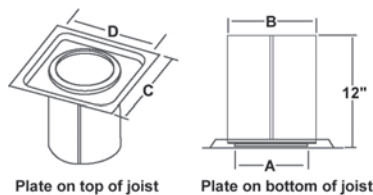


PART #	SIZE	A	B
5TLCFRS	5"	13"	9"
6TLCFRS	6"	14"	10"
7TLCFRS	7"	15"	11"
8TLCFRS	8"	16"	12"

- Required where an enclosed chimney passes from a lower living space into an upper living space
- Maintains the mandatory 2" clearance to combustibles



Firestop Joist Shield



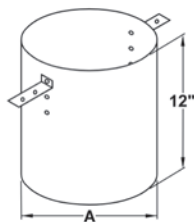
PART #	SIZE	A	B	C	D
10TLCFRS	10"	12 1/8"	14"	18"	16"
12TLCFRS	12"	14 1/8"	16"	20"	18"
14TLCFRS	14"	16 1/8"	18"	22"	20"

Can be installed in either orientation

- Used in floor/ceiling penetrations, other than those that include a ceiling support
- Not required when passing through roof



Rafter Radiation Shield

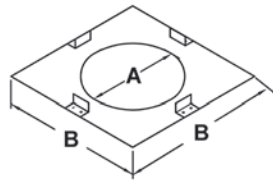
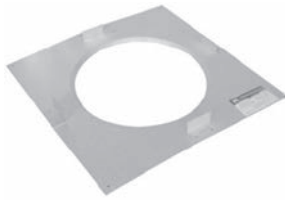


PART #	SIZE	A
5TLCRRS	5"	9"
6TLCRRS	6"	10"
7TLCRRS	7"	11"
8TLCRRS	8"	12"

- The rafter radiation shield must be installed immediately below the roof flashing, inside any enclosure



SHIELDS (CONTINUED)

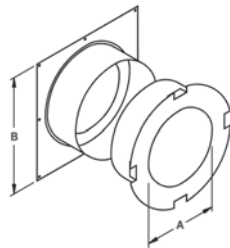


PART #	SIZE	A	B
5TLCSP	5"	7 1/8"	13"
6TLCSP	6"	8 1/8"	14"
7TLCSP	7"	9 1/8"	15"
8TLCSP	8"	10 1/8"	16"

Soffit Plate

- Used where the chimney passes through a flat soffit to provide a finished appearance
- Maintains the mandatory 2" clearance to combustibles
- Does not act as a firestop

WALL THIMBLE



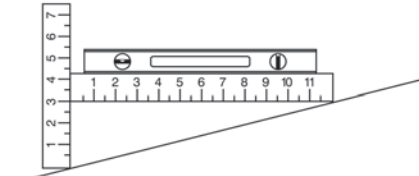
PART #	SIZE	A	B
5TLCWT	5"	7 1/8"	16"
6TLCWT	6"	8 1/8"	16"
7TLCWT	7"	9 1/8"	16"
8TLCWT	8"	10 1/8"	16"
10TLCWTB	10"	12 1/8"	18"
12TLCWTB	12"	14 1/8"	20"
14TLCWTB	14"	16 1/8"	24"

Wall Thimble - Black

- Used in a through-the-wall installation
- Radiation shield is included with spacers which keep the shield centered inside the framed opening for 5" to 8"
- Attractive matte black finishing trim plate is included
- Adjustable wall thickness from 4 1/2" to 8 3/4" for 5" to 8" sizes and from 6" to 11" for 10" to 14" sizes

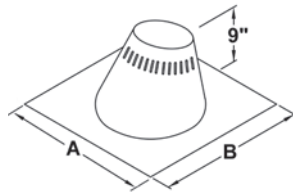
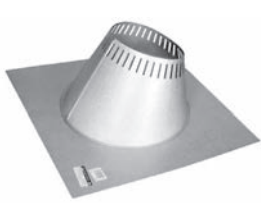
FLASHING

ROOF FLASHING SELECTION CHART



This example shows a 3/12 pitch

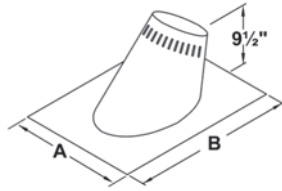
To determine what roof flashing you'll require, you must determine the pitch of the roof. To determine the pitch, you'll need two rulers and a level. Measure the number of inches from the end of the level ruler down to the roof.



Flat to 6/12 Pitch - Adjustable Flashing Assembly

- Used where the chimney passes through a roof with a pitch of Flat to 6/12
- Comes complete with storm collar
- All seams are sealed with silicone sealant
- Galvalume construction

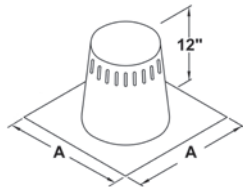
PART #	SIZE	A	B
5TLCF6	5"	24"	24"
6TLCF6	6"	24"	24"
7TLCF6	7"	24"	24"
8TLCF6	8"	27 1/2"	27 1/2"
10TLCF6	10"	27"	31 7/8"
12TLCF6	12"	36"	36 3/8"
14TLCF6	14"	36"	36 3/8"



6/12 to 12/12 Pitch - Adjustable Flashing Assembly

- Used where the chimney passes through a roof with a pitch of 6/12 to 12/12
- Comes complete with storm collar
- All seams are sealed with silicone sealant
- Galvalume construction

PART #	SIZE	A	B
5TLCF12	5"	21 1/2"	30"
6TLCF12	6"	21 1/2"	30"
7TLCF12	7"	21 1/2"	30"
8TLCF12	8"	21 1/2"	30"
10TLCF12	10"	36"	37 1/2"
12TLCF12	12"	36"	40 1/2"
14TLCF12	14"	36"	43 1/2"



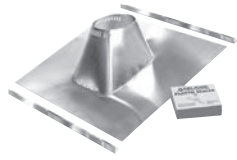
Tall Cone Flashing

- 0/12 to 2/12 pitch
- All seams are sealed with silicone sealant
- Galvalume construction
- Comes complete with storm collar

PART #	SIZE	A
5TLCFF	5"	24" X 24"
6TLCFF	6"	24" X 24"
7TLCFF	7"	24" X 24"
8TLCFF	8"	24" X 24"
10TLCFF	10"	30" X 30"
12TLCFF	12"	32" X 32"
14TLCFF	14"	34" X 34"



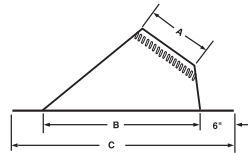
FLASHING (CONTINUED)



PART #	SIZE
TLCMRFK	5" - 8"

Universal Metal Roof Flashing Kit

- Used in conjunction with a standard TLC flashing
- Flashing sold separately



Dead Soft Flashing

- Flashing base designed to be molded to uneven roof surfaces
- Dead soft aluminum base plate
- Storm Collar purchased separately

PART #	SIZE	A	B	C
--------	------	---	---	---

1/12 to 6/12 Dead Soft Flashing

6TLCDSF6	6"	8 1/8"	16 1/2"	30"
7TLCDSF6	7"	9 1/8"	16 1/2"	30"
8TLCDSF6	8"	10 1/8"	19 7/8"	30"

6/12 to 12/12 Dead Soft Flashing

6TLCDSF12	6"	8 1/8"	20"	32"
7TLCDSF12	7"	9 1/8"	20"	32"
8TLCDSF12	8"	10 1/8"	20"	32"



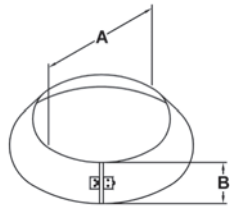
PART #	SIZE
--------	------

TLCRBF	5" - 8"
--------	---------

Rubber Boot Flashing Kit

- This kit fits 5", 6", 7" and 8" chimneys
- Used where the chimney passes through a corrugated roof
- 8" Rubber boot flashing fits roof pitches up to 10/12
- 5"-7" Rubber boot flashing fits roof pitches up to 12/12
- UL-listed
- Kit includes: Special Storm Collar, Rubber Boot, Spacer Kit, Special Boot-Mounting Screws

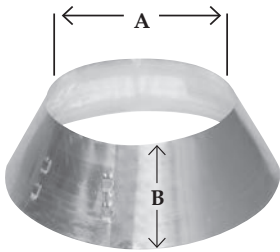
STORM COLLAR



PART #	SIZE	A	B
5TLCSC	5"	7"	4 1/2"
6TLCSC	6"	8"	4 1/2"
7TLCSC	7"	9"	4 1/2"
8TLCSC	8"	10"	4 1/2"
10TLCSC	10"	12"	5 1/2"
12TLCSC	12"	14"	5 1/2"
14TLCSC	14"	16"	5 1/2"

Storm Collar

- Used in conjunction with roof flashing to keep precipitation out



PART #	SIZE	A	B
TLCASC56	5" - 6"	7" - 8"	5 1/2"
TLCASC78	7" - 8"	8" - 10"	5 1/2"

Storm Collar - Adjustable

- Used in conjunction with roof flashing to keep precipitation out



PART #
TLCSS

Silicone Sealant for Storm Collars

- Used to seal storm collar to chimney length above cone of flashing
- 3 ounce tube



ADAPTER		PART #	SIZE	A	B	C
	5TLCSPA	5"	7"	5"	5 1/16"	
	6TLCSPA	6"	8"	6"	5 1/16"	
	7TLCSPA	7"	9"	7"	5 1/16"	
	8TLCSPA	8"	10"	8"	5 1/16"	
	10TLCSPA	10"	12"	10"	3"	
	12TLCSPA	12"	14"	11"	3"	
	14TLCSPA	14"	16"	12"	3"	

Stovepipe Adapter

- For quick and easy transition from black stovepipe to factory-built chimney
- Twist-lock for easy connection
- 5" to 8" is black
- Stainless Steel

INSULATION		PART #	SIZE
		TLCSI	12" X 48" X 2"

Shielding Insulation Wrap

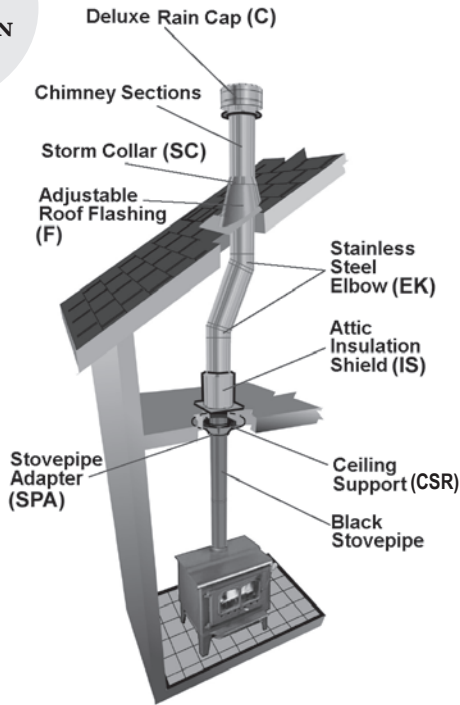
- For use with Attic Insulation Shield, Wall Thimble and Cathedral Ceiling Support Box only
- Protects against radiant heat from the chimney
- Helps maintain temperatures within the chimney system and within the housing envelope to prevent condensation on exterior
- UL-listed specifically for TLC chimney



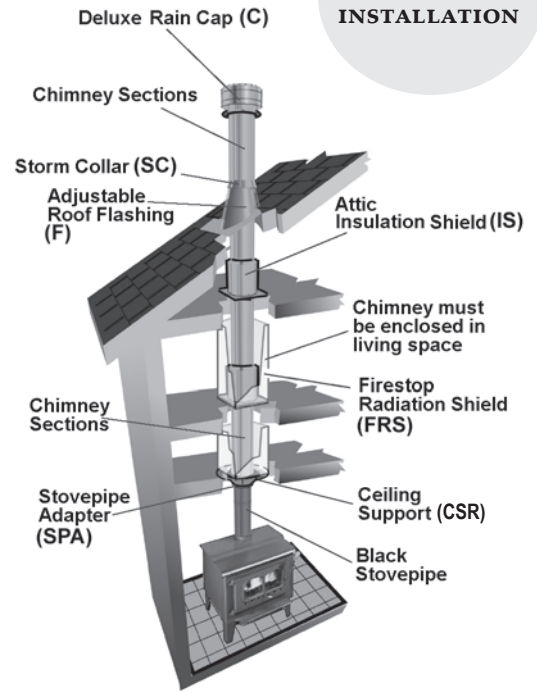
*For better draft & reduced clearances, use the
MODEL DCC DOUBLE WALL STOVEPIPE.*

DECORATOR CEILING SUPPORT INSTALLATIONS

**ONE-STORY
INSTALLATION**

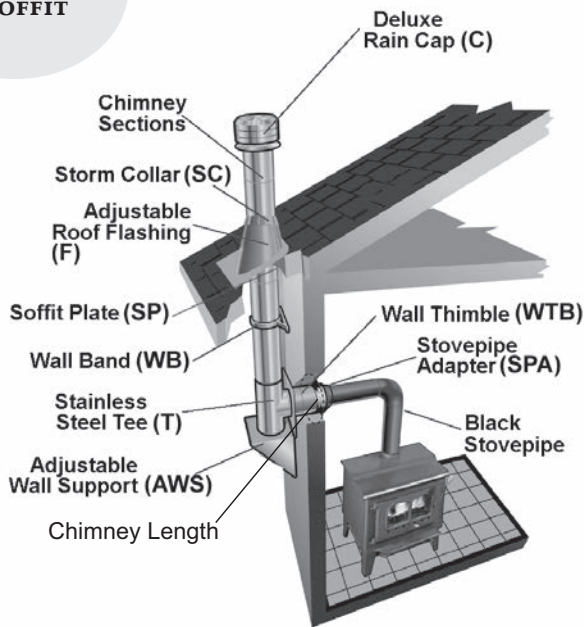


**MULTI-STORY
INSTALLATION**



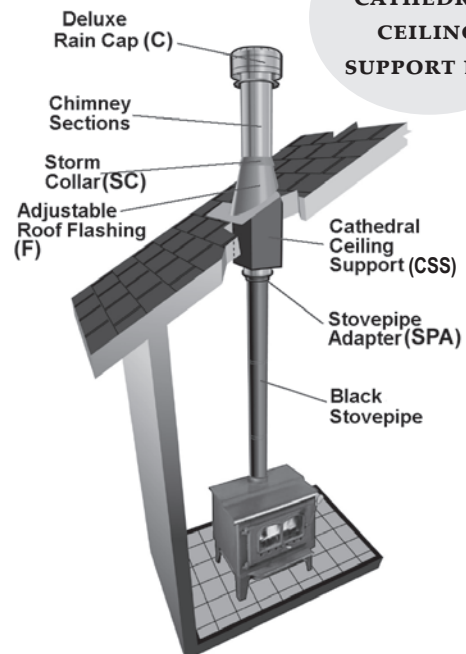
WALL SUPPORT INSTALLATION

**THROUGH
A SOFFIT**



CATHEDRAL SUPPORT INSTALLATIONS

**WITH
CATHEDRAL
CEILING
SUPPORT BOX**





All-Fuel Chimney Model HS Chimney is listed (UL 103 TYPE HT) for venting flue gases not exceeding 1000°F under continuous operating conditions. In addition, UL has conducted additional tests at 1400°F for one hour and 2100°F for 10 minutes to verify compliance with UL test standards. The Model HS incorporates a design woven ceramic fiber refractory blanket. Surrounded by two inner walls, this asbestos-free blanket has excellent high temperature stability, so it stays in place. It is noncombustible, thin, and lightweight. It is light enough to be easily installed by one person.



The **Model HS** blanket exhibits superior resistance to high temperature deterioration. Its insulation has proven so effective that it is used as a fire retardant in aircraft, railroad tank cars, chemical facilities, and commercial buildings.



Model HS is built to last with a system combining corrosion resistant stainless steel and sturdy galvanized steel. All this adds up to extra protection for your customers through AMP's advanced chimney temperature engineering.

Pro-Line Chimney Components

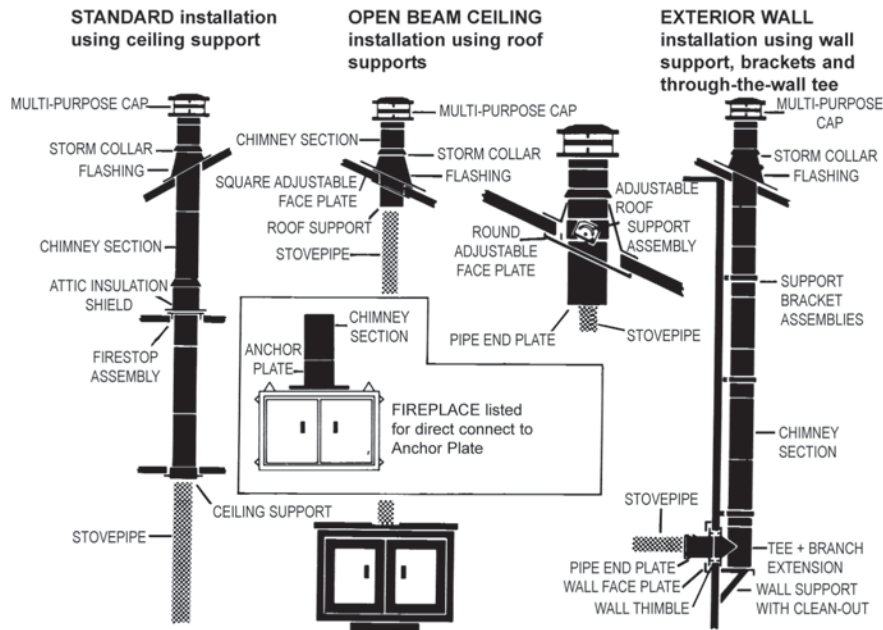
This unique collection of chimney components offers distributors an opportunity to respond to the strong consumer interest in interior design styling. In addition to the standard Model HS chimney components, AMP offers a choice of Pro-Line features, including a square support, a durable black finish, an adjustable roof support, a wide-open design cap, and other components.

Specifications and Dimensions

Usage	The AmeriVent chimney is suitable for use on the following types of appliances:	
	Residential-type Appliances	Ranges, warm air furnaces, water heaters, hot water heating boilers, 15 psig or less steam boilers, floor furnaces, room heaters and fireplace stoves
	Building Heating Appliances	Nonresidential type building heating appliances, steam boilers operating at not over 1000°F flue gas temperature.
	<i>Chimney may also be used where Type B gas vents are permitted</i>	
Available Sizes	(I.D.) 6", 8", and 10"	
Nomenclature	Chimneys, Residential Type and Building Heating Appliance, also known as Type A Chimney and Factory-Built Chimney.	
Approved, Accepted, or Listed by	UL, NFPA, FHA, VA, NBC, UMC, ICBO	

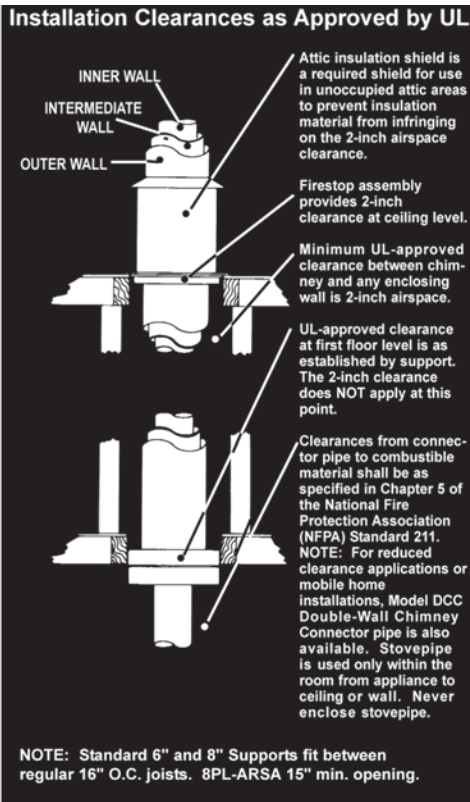
Construction	Model HS/HSS
Inner Wall	.015" 430 Stainless Steel
Insulation	½" Ceramic Fiber Blanket
Intermediate Wall	.012" 430 Stainless Steel
Outer Wall	.018" Galvanized Steel (HS) .015" 430 Stainless Steel (HSS)
Temperature Limits	1000°F for continuous operation. Also tested at 1400°F for periods up to one hour and Model HS 2100°F for up to 10 minutes. <i>(These are standard industry wide limits.)</i>
Weights per Foot	6" = 4lbs, 8" = 5lbs, 10" = 5 ¾lbs
Maximum Height	90' when using Ceiling Supports or Roof Supports. 30' when using Wall Supports and ARSA Adjustable Roof Support Assembly.
Clearances from Chimney Pipe to Combustibles	Chimney sections (pipe) must be installed with at least a 2" airspace clearance to combustible (including roof construction), except in the support area where clearance is established by installation of the supports.

Shown below are the ways to install AmeriVent Pro-Line Chimney Systems.



Chimney must be enclosed where it passes through occupied spaces to maintain required clearances to combustibles and to protect against damage.

NOTE: Outside chimneys are not as desirable, since they are more subject to downdrafts and creosote buildup. An enclosure is highly recommended.





CHIMNEY LENGTHS



Chimney Lengths

- Combine corrosion-resistant stainless steel and sturdy galvanized steel for strong chimney construction
- Lightweight and snap-lock joints offer faster, easier installations
- Also available with a stainless steel outer wall for corrosive environments, Model HSS
- Available in lengths: 6", 12", 18", 24", 36", 48"

PART #	SIZE	ID	OD	LENGTH
6HS-6	6"	6"	9"	6"
6HSS-6	6"	6"	9"	6"
6HS-12	6"	6"	9"	12"
6HSS-12	6"	6"	9"	12"
6HS-18	6"	6"	9"	18"
6HSS-18	6"	6"	9"	18"
6HS-24	6"	6"	9"	24"
6HSS-24	6"	6"	9"	24"
6HS-36	6"	6"	9"	36"
6HSS-36	6"	6"	9"	36"
6HS-48	6"	6"	9"	48"
6HSS-48	6"	6"	9"	48"
8HS-6	8"	8"	11"	6"
8HSS-6	8"	8"	11"	6"
8HS-12	8"	8"	11"	12"
8HSS-12	8"	8"	11"	12"
8HS-18	8"	8"	11"	18"
8HSS-18	8"	8"	11"	18"
8HS-24	8"	8"	11"	24"
8HSS-24	8"	8"	11"	24"
8HS-36	8"	8"	11"	36"
8HSS-36	8"	8"	11"	36"
8HS-48	8"	8"	11"	48"
8HSS-48	8"	8"	11"	48"

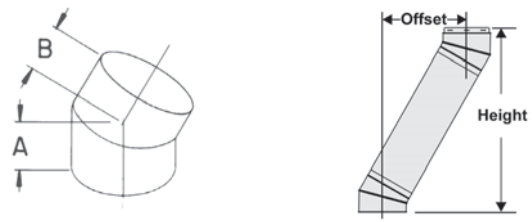
ELBOWS



15° and 30° Elbow Set

- For use in pairs to permit chimney to "go around" joists, rafters or other projections
- Add chimney sections between offsets to produce additional offset
- Elbows are available with a stainless steel outer wall for corrosive environments, Model HSS
- Includes two elbows

PART #	A	B
15° Elbow Set		
6HS-015	4 3/4"	4 3/8"
6HSS-015	4 3/4"	4 3/8"
8HS-015	5 1/2"	5"
8HSS-015	5 1/2"	5"
30° Elbow Set		
6HS-030	4 3/4"	4 3/8"
6HSS-030	4 3/4"	4 3/8"
8HS-030	5 1/2"	5"
8HSS-030	5 1/2"	5"



CHIMNEY OFFSET CHART

Part #	(2) Elbows		(2) Elbows +6" Section		(2) Elbows +12" Section		(2) Elbows +18" Section		(2) Elbows +24" Section		(2) Elbows +36" Section		(2) Elbows +48" Section	
	X	Y	X	Y	X	Y	X	Y	X	Y	X	Y	X	Y
6HS-015	1 3/4"	17 3/7"	3 1/4"	23"	4 3/4"	28 1/4"	6 1/4"	33 1/2"	7 3/4"	38 3/4"	10 3/4"	49 1/4"	13 3/4"	59 3/4"
6HS-030	4"	17"	7"	22 1/4"	10"	27 1/2"	13"	32 3/4"	16"	38"	22"	48 1/2"	28"	59"
8HS-015	2 1/4"	21"	3 3/4"	27"	5 1/4"	30 1/2"	6 3/4"	36 1/2"	8 1/4"	42"	11 1/4"	53 1/2"	14 1/4"	65"
8HS-030	4 1/2"	19 1/2"	7 1/2"	25"	10 1/2"	28 1/2"	13 1/2"	34"	16 1/2"	39"	22 1/2"	49 1/2"	28 1/2"	60"

TEE COMPONENTS



Chimney Tee Assembly

- Consists of a chimney tee, tee branch (made up of one 12" section of chimney), single-wall adapter, pipe end plate, and tee cap
- Use this combination where connection to the chimney is made to the branch of the tee in a through-the-wall installation

Chimney Tee

- Available in a galvanized or stainless steel outer wall

PART #	A	B
Chimney Tee		
6HS-T 6HSS-T	16"	3"
8HS-T 8HSS-T	18"	3"
Chimney Tee Assembly		
6HS-TA 6HSS-TA	16"	3"
8HS-TA 8HSS-TA	18"	3"



Inner Wall Tee Cap

- The pressed-fit cap fits over the bottom end of the inner wall of the Tee

PART #	SIZE
6HS-TCAP	6"
8HS-TCAP	8"



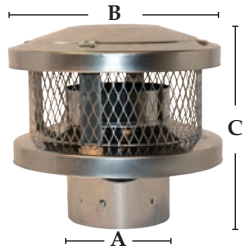
Pro-Line: Outer Wall Insulated Tee Cap

- Screws to the outer wall of the tee, suspended below an Adjustable Roof Support Assembly

PART #	SIZE	A
6PL-ITC	6"	9"
8PL-ITC	8"	11"



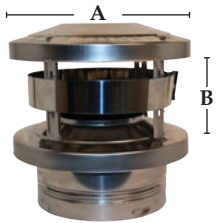
RAIN CAPS



Multi-Purpose Cap with Arrestor

- The durable, all stainless steel constructed cap is designed to minimize downdraft, and features its own spark arrestor/bird debris screen secured to the inside of the pipe

PART #	SIZE	A	B	C
6HS-RCS	6"	6"	12"	11 ¼"
7HS-RCS	7"	7"	14"	11 ¼"
8HS-RCS	8"	8"	14"	11 ¼"

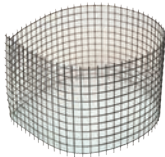


Pro-Line: Multi-Purpose Cap

- Features a wide-open design to reduce creosote and a wind band to meet or exceed UL rain test requirements
- Minimizes downdraft
- A spark arrestor is available to comply with local codes
- Locks onto the outside wall of the pipe.

PART #	SIZE	A	B
6PL-MPC	6"	12"	6"
8PL-MPC	8"	14"	6"

SPARK ARRESTOR



PART #	SIZE
6PL-SA	6"
8PL-SA	8"

Pro-Line: Spark Arrestor/Bird Screen

- Designed to fit the Chimney Cap and meets applicable code requirements

WALL BAND



Wall Band Assembly

- Used to support chimney pipe offset or to secure outdoor chimney to exterior wall while maintaining the proper 2-inch clearance to wall



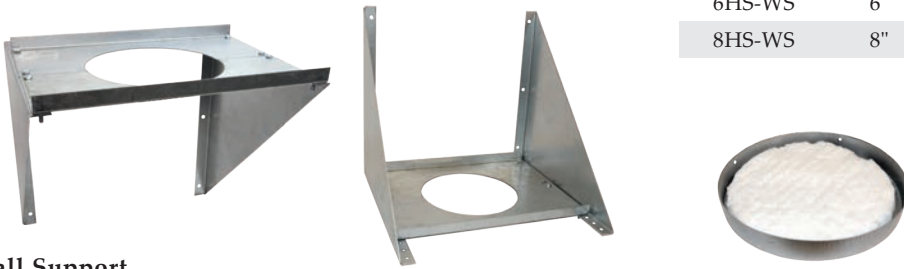
PART #	SIZE
6HS-SBA	6"
8HS-SBA	8"
10FB-SBA	10"

WALL SUPPORT

PART # SIZE

6HS-WS 6"

8HS-WS 8"

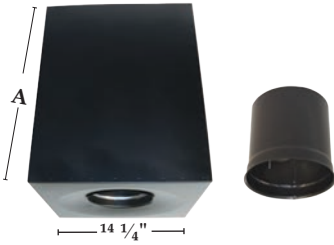


Wall Support

- Supports the chimney tee and chimney
- Attach brackets to wall above or below heavy gauge base plate
- Includes insulated tee cap
- The 2-part plate is secured to the bead at the bottom of the chimney tee

ROOF SUPPORTS

PART # SIZE A MAXIMUM CEILING PITCH



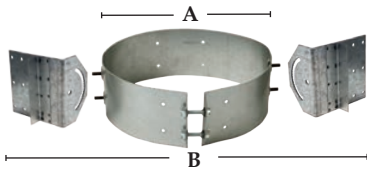
PART #	SIZE	A	MAXIMUM CEILING PITCH	
			Single Wall Connector	Double Wall Connector
6HS-RSA12	6"	18"	0 - 6/12	0 - 10/12
6HS-RSA24	6"	36"	7/12 - 14/12	11/12 - 22/12
8HS-RSA12	8"	18"	0 - 6/12	0 - 10/12
8HS-RSA24	8"	36"	7/12 - 14/12	11/12 - 22/12

Includes: *Stainless Steel black single-wall adapter*

Trim Plate sold separately

Roof Support Box

- Used for exposed-beam ceiling installations
- Available in a black finish
- Use Ceiling Support Assembly when chimney is to be installed in flat ceiling



PART #	SIZE	A	B
6PL-ARSA	6"	9"	13"
8PL-ARSA	8"	11"	15"

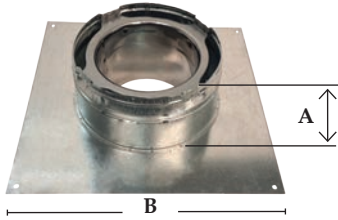
Pro-Line - Adjustable Roof Support

- Designed for sloped or open-beam ceiling construction in retrofit installations
- Adjusts from flat to 24/12 roof pitches
- Use with the Round Adjustable Face Plate Trim Collar



ANCHOR PLATE

PART #	SIZE	A	B
6HS-AP	6"	4 1/8"	15"
8HS-AP	8"	4 1/8"	15"

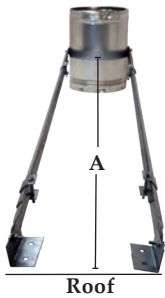


Anchor Plate

- A starter piece used to support and connect chimney sections to a masonry firebox or an appliance that is specifically listed for direct connection to an Anchor Plate and chimney system

ROOF BRACES

PART #	SIZE	A
6HS-RBK	6"	Adjustable 4 1/2' to 7'
8HS-RBK	8"	Adjustable 4 1/2' to 7'

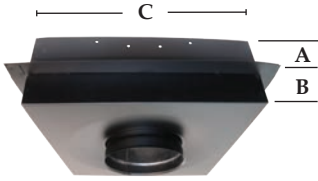


Roof Brace Kit

- Used for tall chimneys or in windy areas to stabilize the chimney above the roof
- Must be used when chimney is 5' or more above the roof

CEILING SUPPORTS

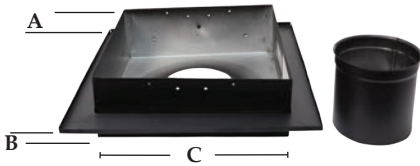
PART #	SIZE	A	B	C
6HS-CSA	6"	3"	2"	14 1/4" sq
8HS-CSA	8"	3"	2"	14 1/4" sq



Ceiling Support Assembly

- Used when a chimney is installed in a flat ceiling
- Available in a black finish, the 6" and 8" sizes fit between regular 16" O.C. ceiling joists, and are cartoned with a stainless steel black single-wall adapter
- For open-beam ceiling installations, use Roof Support Assembly or Roof Support Box

PART #	SIZE	A	B	C
6PL-CSS-BK	6"	3"	2"	14 1/4" sq
8PL-CSS-BK	8"	3"	2"	14 1/4" sq

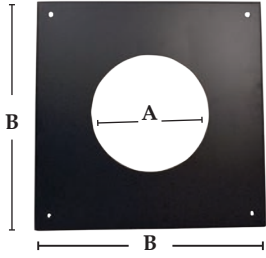


Pro-Line - Ceiling Support Square

- Available in a black finish, the Ceiling Support Square is designed for flat ceiling chimney installations
- Sizes fit between regular 16" O.C. ceiling joists
- Decorative flange eliminates the need for additional trim plate
- Use with single-wall adapter
(For open-beam ceiling installations, use Roof Support Box or Adjustable Roof Support Assembly)



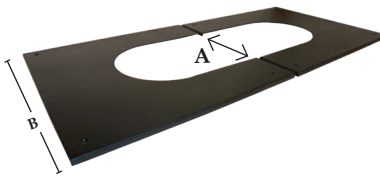
TRIM COLLARS: PRO-LINE



PART #	SIZE	A	B	CEILING PITCH
6PL-WFP-BK	6"	9 1/4"	18 1/4"	Flat
8PL-WFP-BK	8"	11 1/4"	18 1/4"	Flat

Pro-Line: Wall Trim Collar

- Features a 1-piece trim collar with an attractive 3/8" flange for use with Wall Thimble and on flat ceilings for Adjustable Roof Support Assembly



TRIM COLLARS: PRO-LINE (SLOPED)

* must be trimmed to ceilings steeper than 12/12

PART #	SIZE	A	B	CEILING PITCH
6PL-R2FP-BK	6"	9 1/4"	18 1/4"	Flat to 2/12
6PL-R4FP-BK	6"	9 1/4"	18 1/4"	3/12 to 4/12
6PL-R6FP-BK	6"	9 1/4"	18 1/4"	5/12 to 6/12
6PL-R8FP-BK	6"	9 1/4"	18 1/4"	7/12 to 11/12
* 6PL-R12FP-BK	6"	9 1/4"	18 1/4"	11/12 to 24/12
8PL-R2FP-BK	8"	11 1/4"	18 1/4"	Flat to 2/12
* 8PL-R12FP-BK	8"	11 1/4"	18 1/4"	11/12 to 24/12

Pro-Line: Round Adjustable Trim Collar

- A black heavy duty 2-piece decorative trim for use with the adjustable roof support assembly and sloped ceilings, fitting up to 24/12 pitch applications



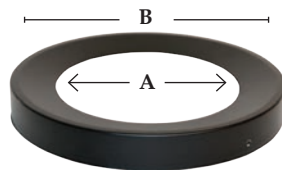
TRIM COLLARS: PRO-LINE (SLOPED)

PART #	SIZE	A	B	CEILING PITCH
PL-SAFP-BK	6", 8"	14 3/8"	18 1/4"	Flat to 24/12

Pro-Line: Square Adjustable Trim Collar

- Consists of a two-piece trim collar that conceals a rough opening where the roof support passes through the ceiling
- Available in a black finish

PLATES



Stovepipe sold separately

PART #	SIZE	A	B
6HS-EP	6"	6 1/16"	9 1/8"
8HS-EP	8"	8 1/16"	11 1/8"

Pipe End Plate

- Used in conjunction with the single-wall adapter to close off the end of the HS/HSS chimney pipe and provide conversion to black stovepipe in through-the-wall and adjustable-roof-support installations

PLATES (CONTINUED)
PART # SIZE

6PL-EPI 6"

8PL-EPI 8"


Pro-Line: Insulated End Plate

- An insulation donut used inside the End Plate and around the SWA to prevent wet, warm air from getting inside the walls of the chimney on adjustable roof supports installations


PART # SIZE A

6PL-TS12-BK 6" 12"

6PL-TS48-BK 6" 48"

8PL-TS12-BK 8" 12"

8PL-TS48-BK 8" 48"

Pro-Line: Trim Sleeve

- Provides an attractive transition from black stovepipe to HS/HSS chimney in a cathedral ceiling

STORM COLLARS
PART # SIZE

6SC 6"

8SC 8"


Storm Collar

- Used with flashings to ensure a watertight installation


PART # SIZE A

PL-ASCWG 6", 8" 3 ½" Galvanized

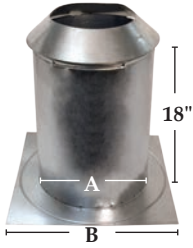
PL-ASCWA 6", 8" 3 ½" Aluminum

Pro-Line: Storm Collar Adjustable

- The multiple-size Adjustable Storm Collar fits both 6" and 8" chimney pipe, and is available in galvanized (ASCWG) and aluminum (ASCWA)
- Use ASCWG with galvanized flashings and the ASCWA with aluminum flashings



SHIELDS

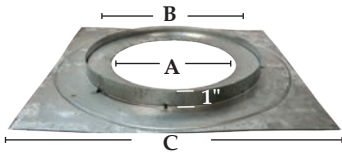


Attic Insulation Shield

- Required in unoccupied attic areas to prevent insulation material from infringing on the 2" airspace clearance

PART #	SIZE	A	B
6HS-AIS	6"	9"	18"
8HS-AIS	8"	11"	18"

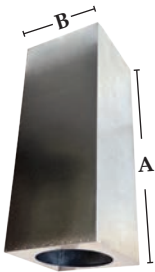
Includes Storm Collar to close off top of Attic Shield



Firestop Assembly

- Required at each floor level, except at ceiling support or roof support, in order to provide correct spacing to combustible materials as the chimney passes through a combustible floor

PART #	SIZE	A	B	C
6HS-FSA	6"	9"	13"	18"
8HS-FSA	8"	11"	15"	18"

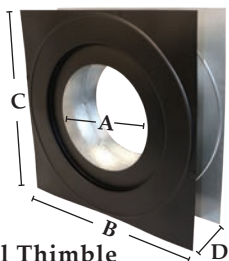


Firestop Joist Shield

- Used when installing an 8" chimney in a 16" O.C. joist construction
- Provides UL-approved clearance between the chimney and the joist
- Also serves as a firestop

PART #	SIZE	A	B
8HS-JS	8"	36"	14 1/4"

WALL THIMBLE

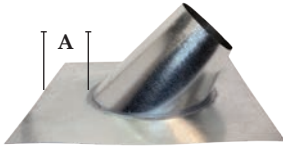


Wall Thimble

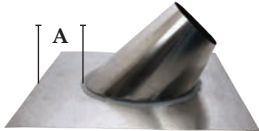
- Used with a tee branch and chimney section to provide proper clearance to combustible materials
- The black painted surface for an interior wall eliminates the need for a trim plate

PART #	SIZE	A	B	C	D
6HS-WTP	6"	9"	13"	18"	Adj from 4 1/2" to 8"
8HS-WTP	8"	11"	15"	18"	Adj from 4 1/2" to 8"

FLASHING

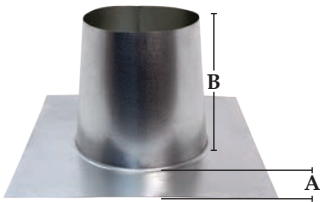


Round Flashing Galvanized - 6FFU12



Round Flashing Aluminum - 6PL-AFFU12

- Available in galvanized and aluminum models flat to 6/12 pitch (Standard), as well as for steeper pitches of 7/12 to 12/12, 13/12 to 18/12, and 19/12 to 24/12.



Tall Cone Flashing

- Used for flat to 1/12 pitch roofs, as well as on flat roofs in snowpack areas to reduce chances of leakage

PART #	SIZE	PITCH	(A) SKIRT	METAL
6F 6PL-AF	6"	Std. Flat to 6/12	4"	Galvanized Aluminum
8F 8PL-AF	8"	Std. Flat to 6/12	4"	Galvanized Aluminum
6FFU 6PL-AFFU	6"	Flat to 6/12	6"	Galvanized Aluminum
8FFU 8PL-AFFU	8"	Flat to 6/12	6"	Galvanized Aluminum
6FFU12 6PL-AFFU12	6"	7/12 to 12/12	6"	Galvanized Aluminum
8FFU12 8PL-AFFU12	8"	7/12 to 12/12	6"	Galvanized Aluminum
6FFU18 6PL-AFFU18	6"	13/12 to 18/12	6"	Galvanized Aluminum
8FFU-18 8PL-AFFU18	8"	13/12 to 18/12	6"	Galvanized Aluminum
6FFU24 6PL-AFFU24	6"	19/12 to 24/12	6"	Galvanized Aluminum
8FFU24 8PL-AFFU24	8"	19/12 to 24/12	6"	Galvanized Aluminum

PART #	SIZE	A	B
6FT	6"	4" on 4 sides	12"
8FT	8"	4" on 4 sides	12"

ADAPTER



Stovepipe Adapter

- Included in a ceiling support assembly, roof support assembly, and tee assembly for easier installation of single-wall connector pipe

PART #	SIZE
6SWA	6"
8SWA	8"



CHIMNEY KITS



**CEILING
SUPPORT
KIT**

PART #

6HS-RKS

8HS-RKS

- Kit Contains:
- 1 - Stainless Steel Rain Cap
 - 1 - Flat to 6/12 pitch Flashing
 - 1 - Storm Collar
 - 1 - Ceiling Support
 - 1 - Stovepipe Adapter



**CATHEDRAL
SUPPORT
KIT**

PART #

6HS-RKRS

8HS-RKRS

- Kit Contains:
- 1 - Stainless Steel Rain Cap
 - 1 - Flat to 6/12 pitch Flashing
 - 1 - Storm Collar
 - 1 - Tall Roof Support (18")
 - 1 - Stovepipe Adapter



**THROUGH
THE WALL
KIT**

PART #

6HS-TWK

6HSS-TWK

8HS-TWK

8HSS-TWK

- Kit Contains:
- 1 - Stainless Steel Rain Cap
 - 1 - Tee Assembly
 - 1 - Flat to 6/12 Flashing
 - 1 - Storm Collar
 - 1 - Wall Support
 - 1 - Painted Wall Thimble
 - 3 - Support Bracket Assemblies

INSTALLATION INFORMATION



UL 103 HT 2100° F
Models 6 and 8 HS feature a ceramic fiber refractory blanket to withstand intermittent temperatures up to 2100°F, as called for in UL 103 HT Standard



LIGHTWEIGHT: Lightweight chimney makes for a fast, easy one-man installation. A minimum 2" airspace clearance to combustibles is required.



SMALL ODs: The small ODs let you install this compact prefabricated chimney in less space. The outside diameters are only 3" larger than inside diameters.

SNAP-LOCK DESIGN: The proven snap-lock coupling system goes together fast - and keeps this chimney rigid and trouble-free. No cement, screws, or straps are needed. The system is easy to connect in tight spots.





Direct Vent provides a complete line of components for all typical installations, both vertical and horizontal. The factory-assembled construction of Direct Vent is unique, having a galvanized steel outer wall and superior corrosion-resistant stainless steel inner wall. Direct Vent fits most existing start collars.



The inner-wall, factory-installed graphite gasket makes for easy, secure twist-lock installation. The 360° rotation allows elbows and straight pipe to rotate in either direction, while still maintaining the secure lock system.

Specifications and Dimensions

Usage	For venting direct vent gas appliances listed or certified for use with AmeriVent Direct Vent. For information on venting gas appliances having draft hoods and other appliances listed to be used with Type B Gas Vent, request our Type B Gas Vent Catalog. For information on venting unlisted gas appliances or appliances burning solid or liquid fuels, request our TLC Chimney Catalog.
Material	Inner Pipe: Type 430 Stainless Steel Outer Pipe: Galvanized Steel
Clearances	Refer to the appliance manufacturer’s installation instructions for minimum clearances to combustibles.
Approved, Accepted, or Listed by	CSA, ITS, OMNI, UL

Pipe Size	Inner Thickness	Outer Thickness
Nominal 4" ID X 6 5/8" OD	.012"	.018"
Nominal 5" ID X 8" OD	.012"	.018"

Available Lengths: 7", 12", 24", 36", 48"

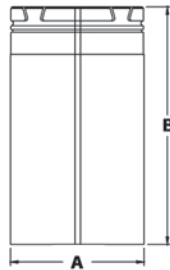
LENGTHS



Lengths

- Twist-lock joints offer fast installations
- Factory-installed inner gasket ensures a leak-free joint
- Co-axial tube construction with a stainless steel inner wall and a galvanized steel outer wall, separated by two spacers
- $\frac{1}{4}$ " overlap at joints

PART #	FINISH	LENGTH	SIZE	ID	OD
4D7 4D7B	Black	7"	4" X 6 $\frac{5}{8}$ "	4"	6 $\frac{5}{8}$ "
4D12 4D12B	Black	12"	4" X 6 $\frac{5}{8}$ "	4"	6 $\frac{5}{8}$ "
4D2 4D2B	Black	24"	4" X 6 $\frac{5}{8}$ "	4"	6 $\frac{5}{8}$ "
4D3 4D3B	Black	36"	4" X 6 $\frac{5}{8}$ "	4"	6 $\frac{5}{8}$ "
4D4 4D4B	Black	48"	4" X 6 $\frac{5}{8}$ "	4"	6 $\frac{5}{8}$ "
5D7 5D7B	Black	7"	5" X 8"	5"	8"
5D12 5D12B	Black	12"	5" X 8"	5"	8"
5D2 5D2B	Black	24"	5" X 8"	5"	8"
5D3 5D3B	Black	36"	5" X 8"	5"	8"
5D4 5D4B	Black	48"	5" X 8"	5"	8"



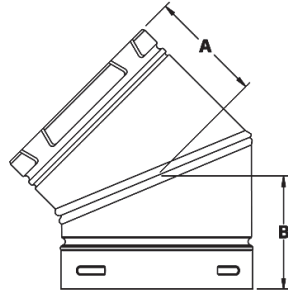
Adjustable Lengths

- Telescopes onto standard pipe sections for adjustments
- Includes stainless steel self-tapping screws

PART #	FINISH	ADJ. LENGTH	SIZE	A	B
4D7A 4D7AB	Black	3" to 5"	4" X 6 $\frac{5}{8}$ "	6 $\frac{11}{16}$ "	7"
4D12A 4D12AB	Black	3" to 10"	4" X 6 $\frac{5}{8}$ "	6 $\frac{11}{16}$ "	12"
4D16A 4D16AB	Black	3" to 14"	4" X 6 $\frac{5}{8}$ "	6 $\frac{11}{16}$ "	16"
4D26A 4D26AB	Black	3" to 24"	4" X 6 $\frac{5}{8}$ "	6 $\frac{11}{16}$ "	26"
5D7A 5D7AB	Black	3" to 5"	5" X 8"	8 $\frac{1}{8}$ "	7"
5D12A 5D12AB	Black	3" to 10"	5" X 8"	8 $\frac{1}{8}$ "	12"
5D16A 5D16AB	Black	3" to 14"	5" X 8"	8 $\frac{1}{8}$ "	16"
5D26A 5D26AB	Black	3" to 24"	5" X 8"	8 $\frac{1}{8}$ "	26"



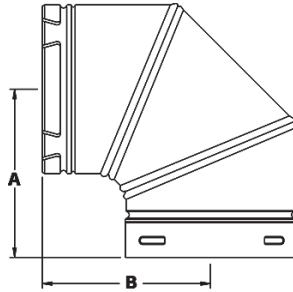
ELBOWS



PART #	FINISH	SIZE	A	B
4D45L 4D45LB	Black	4" X 6 5/8"	4 1/2"	4 1/2"
5D45L 5D45LB	Black	5" X 8"	4 3/4"	4 3/4"

45° Elbow

- Use with 45° fireplace adapters or in pairs to go around obstructions
- Add pipe sections between elbows for additional offset



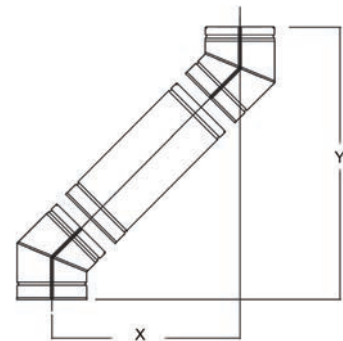
PART #	FINISH	SIZE	A	B
4D90L 4D90LB	Black	4" X 6 5/8"	6 11/16"	6 9/16"
5D90L 5D90LB	Black	5" X 8"	7 1/2"	7 5/32"

90° Elbow

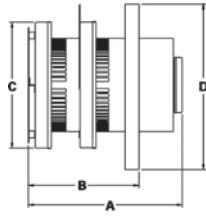
- Three-section design provides smooth, low resistant 90° offset

45° OFFSET CHART

PIPE LENGTH	4" x 6 5/8"		5" x 8"	
	X - RUN	Y - RUN	X - RUN	Y - RUN
two 45's only	6"	14 1/8"	5 3/4"	15 3/16"
7"	9 3/16"	18 3/16"	9 1/2"	19"
12"	12 3/4"	21 3/4"	13"	22 1/2"
24"	21 1/4"	30 1/4"	21 1/2"	31"
36"	29 11/16"	38 11/16"	30"	39 1/2"
48"	38 3/16"	47 3/16"	38 1/2"	48"

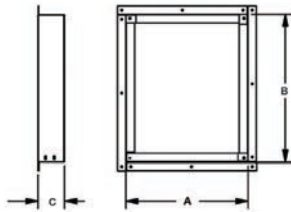


RAIN CAPS

Round Horizontal Cap


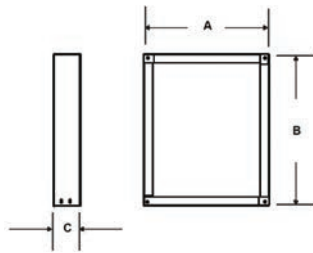
PART #	SIZE	A	B	C	D
4DHC	4" X 6 5/8"	11"	8"	9 1/4"	12"
5DHC	5" X 8"	13"	8 1/2"	11"	14 1/4"

- For horizontal venting applications
- Corrosion-resistant construction with stainless steel inner wall
- Low-restriction design improves efficiency and minimizes wall temperature


Vinyl Siding Standoff - Before Vinyl Siding Installed


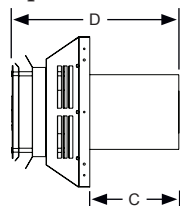
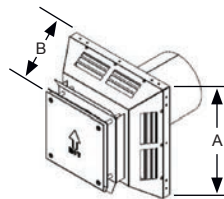
PART #	SIZE	A	B	C
4DVSK	4"	11.9"	11.9"	3"
5DVSK	5"	14.9"	17.9"	3"

- Required for vinyl siding applications
- DVSK for use before vinyl siding is installed
- For use with Round Horizontal Cap
- Assembly required


Vinyl Siding Standoff - After Vinyl Siding Installed


PART #	SIZE	A	B	C
4DVSB	4"	12 1/4"	12 1/4"	3"
5DVSB	5"	14 1/8"	17 1/8"	3"

- Required for vinyl siding applications
- DVSB for use after vinyl siding is installed
- For use with Round Horizontal Cap
- Assembly required


Adjustable Square Horizontal Cap


PART #	SIZE	A	B	C	D
4DAHCS	4" X 6 5/8"	13.6"	7"	8"	15.1"
5DAHCS	5" X 8"	16"	7"	8"	15.1"

- For horizontal venting applications
- New design provides installer an additional 5" of flexibility
- Now even simpler to connect the venting system to the termination
- No need to be exact in the length of your horizontal run
- Sleek, low profile design
- Supplied with insulation pad



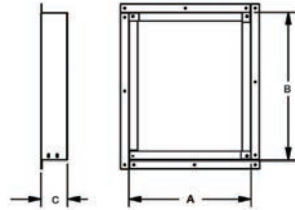
PART #	SIZE	A	B	C
--------	------	---	---	---



4DVSL	4" X 6 5/8"	6 7/8"	17 3/8"	2"
5DVSL	5" X 8"	8 1/4"	19 7/8"	2"

- DVSL used with metal siding, brick or masonry finished surfaces

Low Profile Siding Shield - Square Terminations

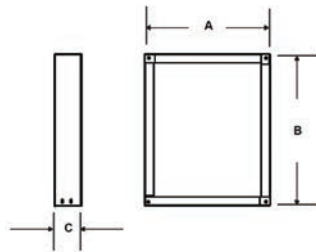


Square Vinyl Siding Standoffs - Before Vinyl Siding Installed

PART #	SIZE	A	B	C
--------	------	---	---	---

4DHVSK	4" X 6 5/8"	13 5/16"	13 5/16"	3"
5DHVSK	5" X 8"	15 13/16"	15 13/16"	3"

- Required for vinyl siding applications
- DHVSK for use before vinyl siding is installed
- For use with Square Horizontal Cap
- Assembly required

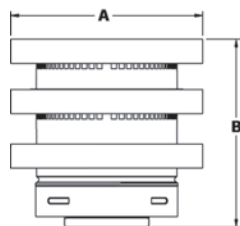


Square Vinyl Siding Standoffs - After Vinyl Siding Installed

PART #	SIZE	A	B	C
--------	------	---	---	---

4DHVSB	4" X 6 5/8"	13 5/16"	13 5/16"	3"
5DHVSB	5" X 8"	15 13/16"	15 13/16"	3"

- Required for vinyl siding applications
- DHVSB for use after vinyl siding is installed
- For use with Square Termination Cap
- Assembly required

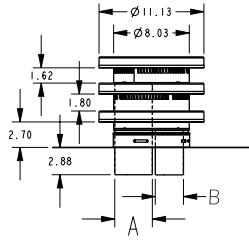


Vertical Cap

- For vertical venting applications
- Corrosion resistant construction with stainless steel inner wall
- Low-restriction design improves efficiency

PART #	SIZE	A	B
--------	------	---	---

4DVC	4" X 6 5/8"	9 1/4"	9"
5DVC	5" X 8"	11 1/4"	9 1/2"



Integrated Cap and Direct Vent Liner Kit

- Integrated fresh air/flue connections
- No adapter required
- 16" x 16" flashing base

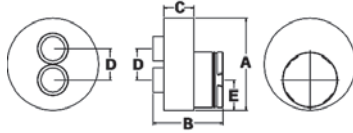
PART #	SIZE	A	B
--------	------	---	---

Collinear Cap

DVCC33	3" / 3"	3"	3"
DVCC43	4" / 3"	4"	3"

35ft Liner Kit

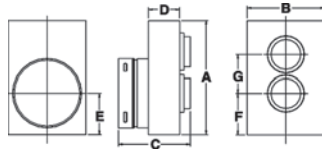
DVIK33	3" / 3"	includes two 35' lengths of aluminum flexible pipe	
DVIK43	4" / 3"	includes two 35' lengths of aluminum flexible pipe	



PART #	SIZE	A	B	C	D - DIA	E - DIA
4DCAT33	4" X 6 5/8"	11"	9"	4"	3"	3"
4DCAT43	4" X 6 5/8"	11"	9"	4"	3"	4"

Collinear Connectors: Top Kit

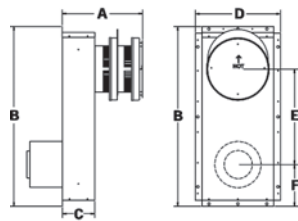
- Use at top of existing chimney to convert Collinear tubes to Co-axial AmeriVent Direct Vent
- Flashing is included



PART #	SIZE	A	B	C	D	E-DIA	F-DIA
4DCAB33	4" X 6 5/8"	11"	7 1/2"	7 1/2"	3"	3"	3"
4DCAB43	4" X 6 5/8"	11"	7 1/2"	7 1/2"	3"	3"	4"

Collinear Connectors: Appliance Adapter

- Use at appliance for connecting from Co-axial start collars to a pair of Collinear tubes passing through existing chimneys



PART #	SIZE	A	B	C	D	E	F
4D14S	4" X 6 5/8"	12"	26 1/2"	4 3/4"	12 1/2"	14"	6 1/4"
4D36S	4" X 6 5/8"	12"	48 1/2"	4 3/4"	12 1/2"	36"	6 1/4"
5D14S	5" X 8"	14 1/2"	26 1/2"	6 1/2"	14 1/4"	14"	6 1/4"
5D36S	5" X 8"	14 1/2"	48"	6 1/2"	14 1/4"	36"	6 1/4"

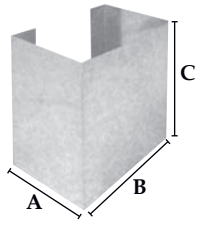
Snorkel Cap

- Use for horizontal vent installations that require a vertical rise on the exterior of the building
- Corrosion-resistant construction with stainless steel inner wall
- Low-restriction design improves efficiency and minimizes wall temperature



WIND SCREEN / COVER

PART #	A	B	C
4DHWS	9"	13 1/4"	14 3/4"

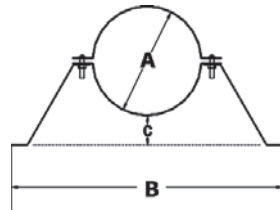


Wind Screen / Cover

- Added protection in high-wind areas
- Installs directly on the base - no additional holes required
- Wind screen for Horizontal Cap; works for 4" or 5" caps
- Galvanized steel can be painted to match home exterior
- Non-UL listed

WALL BAND

PART #	A	B	C
4DWS	6 5/8"	15 1/2"	2"
5DWS	8"	18"	2"

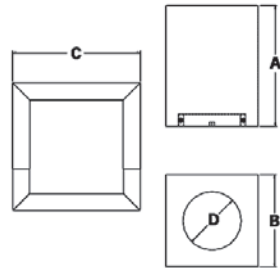


Wall Band

- Provides lateral support for vent and offsets, while maintaining clearance from the wall

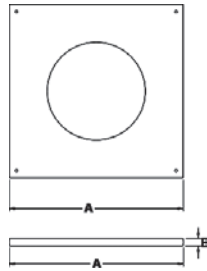
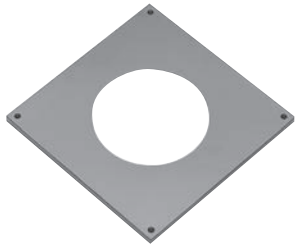
CEILING SUPPORT

PART #	A	B	C	D
4DRSB	14"	11 3/8"	15 3/8"	6 3/4"
5DRSB	14"	11 3/8"	15 3/8"	8 1/8"



Cathedral Ceiling Support

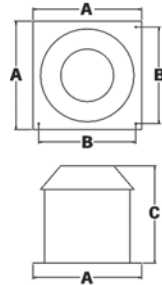
- Use as support and firestop in cathedral ceiling installations
- Fits from flat to 12/12 pitch ceilings
- Use the included trim plate to conceal rough opening
- Painted Black

TRIM COLLAR


PART #	A	B
4DTPB	12"	1/2"
5DTPB	14 1/4"	1/2"

Trim Collar

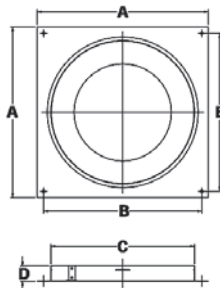
- Use as a decorative cover for the Firestop Support Plate or Wall Thimble
- Painted black

SHIELD


PART #	A	B	C
4DAIS12	14"	12 1/4"	12"
5DAIS12	14"	12 1/4"	12"
4DAIS36	14"	12 1/4"	36"
5DAIS36	14"	12 1/4"	36"

Attic Insulation Shield

- Use to keep insulation from making direct contact with vent pipe
- Use on single-story or on top story of multi-story building

FIRESTOP


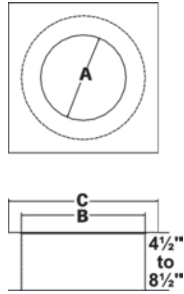
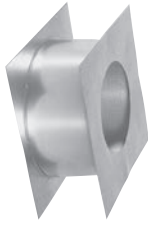
PART #	A	B	C	D
4DFSP	12"	11"	10"	1"
5DFSP	14"	13"	11"	1"

Firestop Support Plate

- Provides vertical support for vent maintains clearance when penetrating a flat ceiling or to combustibles
- Can be used with Trim Collar for the interior ceiling
- Acts as a firestop



WALL THIMBLE

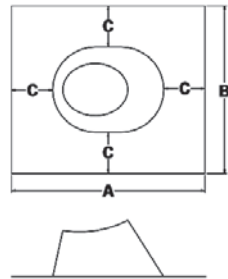
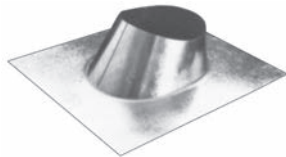


PART #	A	B	C
4DWTS	6 7/8"	10"	11 1/16"
5DWTS	8 1/4"	11 1/2"	14"

Wall Thimble

- Provides clearance to combustibles in through-the-wall installations
- Acts as a firestop
- Can be used with a black painted Face Plate for the interior wall
- Adjustable from 4 1/2" to 8 1/2"

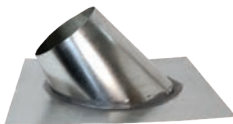
FLASHINGS



PART #	A	B	C
4DF	18 3/4"	16"	4"
5DF	20"	17 3/4"	4"

Standard Flashing

- Fits flat to 5/12 pitch roofs
- Double-seamed construction for protection from leaks

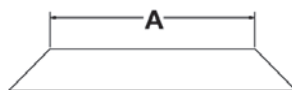


PART #	A	B	C
4DF12	22 1/2"	17"	4"
5DF12	21 3/4"	21 3/4"	4"

Steep Pitch Flashing

- Fits 6/12 to 12/12 pitch roofs
- Double seamed construction for protection from leaks

STORM COLLAR



PART #	A
4DSC	6 5/8"
5DSC	8"

Storm Collar

- Used to seal the gap between the flashing and vent pipe
- Seal with mastic

ADAPTERS


PART #	DESCRIPTION
4DSC-V	Valor Adapter
4DSC-K	Kingsman Adapter
5DSC-N	Napoleon Adapter - Mill
4DSCB-N1	Napoleon Adapter - Black
4DSC-N2	Napoleon Adapter - Mill
4DSC-VC	Vermont Casting

Valor Adapter (4DSC-V)

- Engineered for Valor fireplaces, requiring 4" x 6 5/8" direct vent venting


Kingsman Adapter (4DSC-K)

- For use specifically with 4" x 7" Kingsman appliances


**Napoleon Adapter
(5DSC-N)**

**Napoleon Adapter
Black (4DSCB-N1)**

**Napoleon Adapter Mill
(4DSC-N2)**

- For use specifically with Napoleon and Continental fireplaces and stoves


**Direct Vent to Direct Temp &
Direct Temp to Direct Vent Adapters**

- Adapters to use 4" & 5" Selkirk Direct Temp with the 4" & 5" Amerivent Direct Vent product line
- Adapters to use 4" & 5" Amerivent Direct Vent with the 4" & 5" Selkirk Direct Temp product line

PART #	DESCRIPTION	HEIGHT
1604280	4" AMP DV to 4" SLK DT	6"
1604280B	4" AMP DV to 4" SLK DT Black	
1605280	5" AMP DV to 5" SLK DT	6"
1605280B	5" AMP DV to 5" SLK DT Black	
1604281	4" SLK DT to 4" AMP DV	6"
1604281B	4" SLK DT to 4" AMP DV Black	
1605281	5" SLK DT to 5" AMP DV	6"
1605281B	5" SLK DT to 5" AMP DV Black	

Note: Collinear Connectors: Appliance Adapter, Collinear Connectors: Top Kit see page 41.

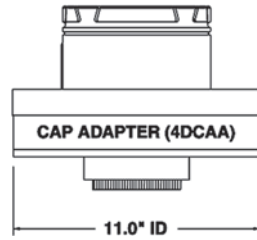


CHIMNEY CONVERSION KITS

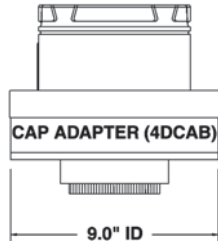
See Direct Vent Installation Illustrations



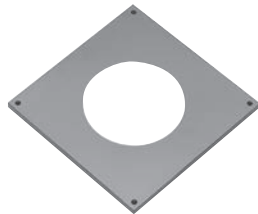
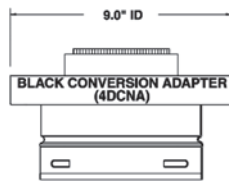
Cap Adapter (4DCAA)



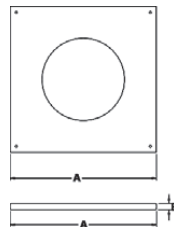
Cap Adapter (4DCAB)



Black Conversion Adapter (4DCNA)



Trim Collar (4DFPB)



PART # DESCRIPTION AND COMPONENTS

4DRCKA Class A: 8" Co-Axial Chimney Conversion Kit

Used when converting an existing 8" factory-built chimney to a direct vent appliance.

- Includes: Conversion Adapter (4DCNA)
- Cap Adapter - Large (4DCAA)

Requires a 4" and 7" flexible aluminum vent pipe (sold separately)

PART # DESCRIPTION AND COMPONENTS

4DRCKM Masonry Chimney Conversion Kit

Used when converting an existing masonry chimney to a direct vent appliance.

- Includes: Conversion Adapter (4DCNA)
- Cap Adapter - Small (4DCAB)
- Trim Collar (4DFPB)
- Flashing 17" x 17" (117413)

Requires a 4" and 7" flexible aluminum vent pipe (sold separately)

MISCELLANEOUS

PART #



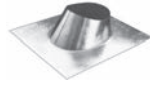
Black Touch-Up Paint

- Forrest 1A54D206 is the recommended touch-up paint.

AVD-PTU

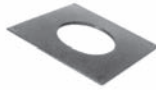
TERMINATION KITS
Vertical Termination Kit

vertical cap

storm collar

standard flashing
PART # DESCRIPTION & COMPONENTS
4DVTK Vertical Termination Kit
Fits flat to 5/12 roof pitch

 Includes: Vertical Cap (4DVC)
 Storm Collar (4DSC)
 Standard Flashing (4DF)

Horizontal Termination Kit #1

black 90° elbow

black trim collar

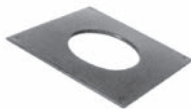
round horizontal cap

24" black length

12" adjustable black length
PART # DESCRIPTION & COMPONENTS
4DHTK1 Horizontal Termination Kit #1

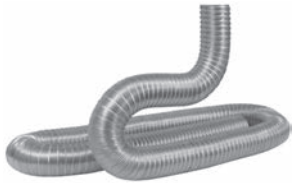
 Includes 90° Elbow - Black (4D90LB)
 Trim Collar (4DTPB)
 Round Horizontal Cap (4DHC)
 24" Chimney Length - Black (4D2B)
 12" Chimney Length Adj. - Black (4D12AB)

Horizontal Termination Kit #2

black 90° elbow

black trim collar

round horizontal cap
PART # DESCRIPTION & COMPONENTS
4DHTK2 Horizontal Termination Kit #2

 Includes 90° Elbow - Black (4D90LB)
 Trim Collar (4DTPB)
 Round Horizontal Cap (4DHC)

VENT PIPE
PART # SIZE


1730250 3" x 25'

1730350 3" x 35'

1740250 4" x 25'

1740350 4" x 35'

1770250 7" x 25'

1770350 7" x 35'

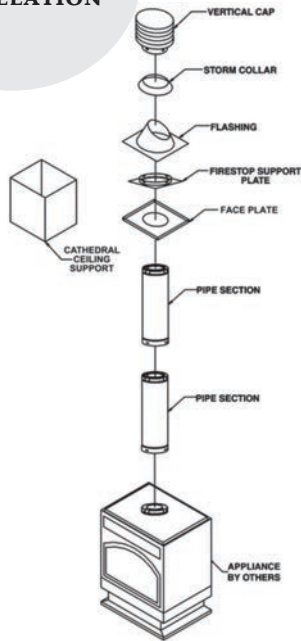
Flexible Aluminum Vent Pipe

- Flexible 2-ply aluminum vent used for collinear and co-axial vent systems

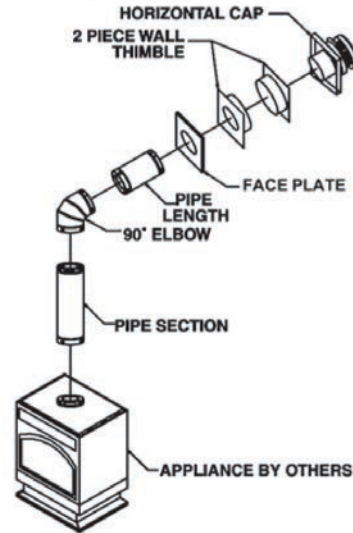


TYPICAL AMERIVENT DIRECT VENT INSTALLATIONS

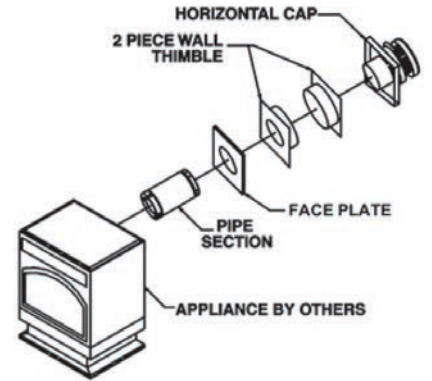
VERTICAL INSTALLATION



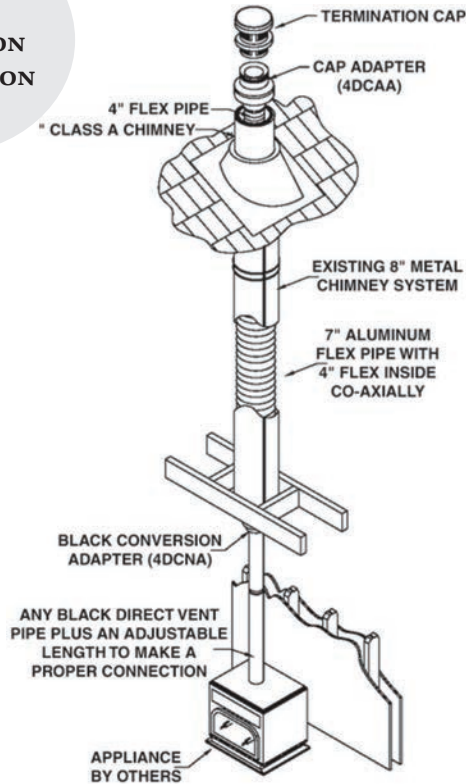
VERTICAL TO HORIZONTAL INSTALLATION



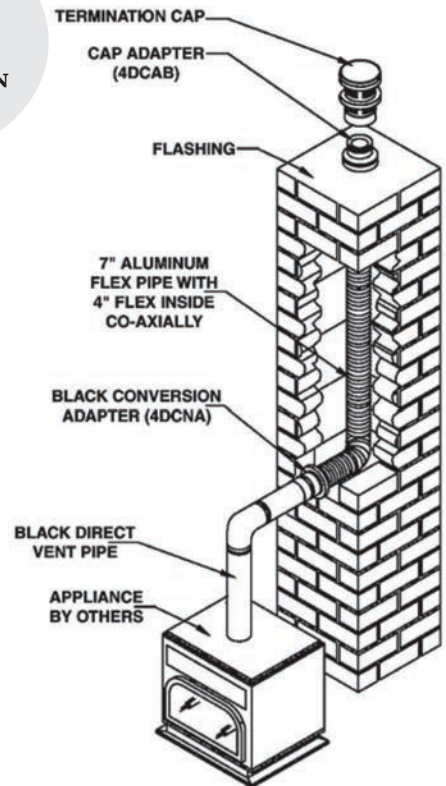
REAR EXIT HORIZONTAL INSTALLATION



CLASS A CONVERSION INSTALLATION



MASONRY CONVERSION INSTALLATION





Ultimate Pellet Pipe is a premiere venting system designed with the installer in mind. Fast, sealed and secure assembly coupled with laser-welded seams and smooth joint connections create a pipe system that is sleek and beautiful.



No need for silicone sealant with Ultimate Pellet Pipe. The gasket design seals the pipe tight, eliminating the need for silicone at the seams.

Offer your customers a superior pellet venting solution, Ultimate Pellet Pipe features:



- Easy to assemble
- Silicone gasket sealed
- Laser-welded seams
- Smooth joint connections
- 360° Lock-Tab secure rotation
- Lock-Tab allows for easy dismantling for inspection and cleaning
- 300 Series stainless steel inner, galvalume outer
- Complete offering of painted pipe, fittings, and components
- 1" Clearance to combustibles



The Ultimate Hearth Solution for Pellet Stove Venting

Stainless Steel and Galvalume Construction

The Ultimate Pellet Pipe's inner pipe is made of 300 series stainless steel which provides exceptional corrosion resistance. The outer pipe is manufactured with galvalume steel, for superior protection against harsh outdoor elements.

High Temperature Paint or Galvalume Exterior

Ultimate Pellet Pipe is available finished in a matte black or unpainted galvalume. Our high temperature matte black paint will withstand temperatures up to 1200° F and look beautiful for years.

Smooth Joint Connections

Our unique end forming process creates a connection joint that provides a smooth, clean profile. The gasket within the pipe seals the connection tight, providing a superior, leak-free connection.



Gasket Technology

Say goodbye to messy silicone to seal those joints. Ultimate Pellet Pipe's superior silicone gasket technology seals the system and eliminates fly ash from escaping. Easy to assemble. Easy to take apart for inspection and cleaning. Ultimate Pellet Pipe's silicone gasket technology has been field proven for more than 15 years.

Laser-Welded Seams

Both the inner and outer pipes are laser-welded, creating a smooth seam and consistently round pipe. No seam, tight seal, no problem!

Lock-Tab™ Security

Ultimate Pellet Pipe features a female end Lock-Tab system. When engaged, the Lock-Tab will securely hold pipe in place, allowing 360° rotation. This unique feature is easy to engage and disengage. Fast, easy, and secure!

Specifications and Dimensions

Model UPP has been tested and listed by Underwriters Laboratories Inc. in accordance with:

US Standards	UL641: Type L low temperature venting systems
	UL103 (<i>applicable portions of</i>): The standard for residential type and building heating appliance chimneys
Canadian Standards	ULC-S609: Low temperature type L vents
	ULC/ORD-C441: Other recognized document for pellet vents

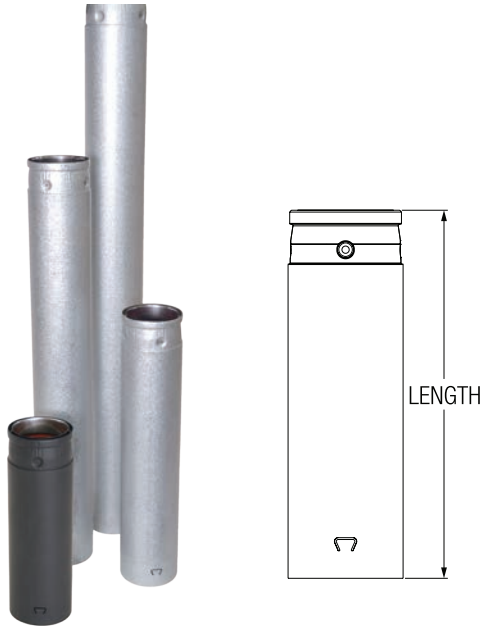
US Standard for Chimneys, Fireplaces, Vents and Solid Fuel Burning Appliances, NFPA-211

Canadian Installation Code for Solid Fuel Burning Appliances and Equipment, CSA-B365

The UPP system is rated for flue temperatures up to 570°F/ 300°C and is backed by our Smart Choice Warranty



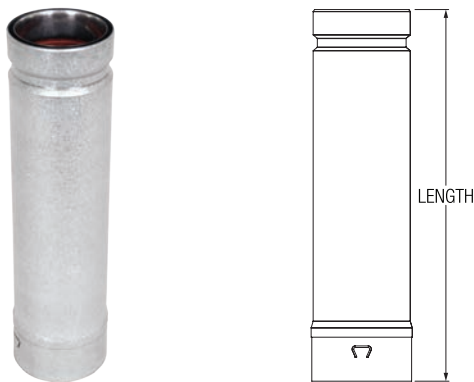
LENGTHS



Lengths

- Available in lengths of 6", 12", 18", 24", 36" and 60"
- 1 3/4" overlap at joints
- Painted black or unpainted

PART #	PRODUCT CODE	FINISH	LENGTH
3" Diameter			
3UPP-6	823000		6"
3UPP-6B	823000B	Black	6"
3UPP-12	823001		12"
3UPP-12B	823001B	Black	12"
3UPP-18	823002		18"
3UPP-18B	823002B	Black	18"
3UPP-24	823003		24"
3UPP-24B	823003B	Black	24"
3UPP-36	823004		36"
3UPP-36B	823004B	Black	36"
3UPP-60	823005		60"
3UPP-60B	832005B	Black	60"
4" Diameter			
4UPP-6	824000		6"
4UPP-6B	824000B	Black	6"
4UPP-12	824001		12"
4UPP-12B	824001B	Black	12"
4UPP-18	824002		18"
4UPP-18B	824002B	Black	18"
4UPP-24	824003		24"
4UPP-24B	824003B	Black	24"
4UPP-36	824004		36"
4UPP-36B	824004B	Black	36"
4UPP-60	824005		60"
4UPP-60B	824005B	Black	60"



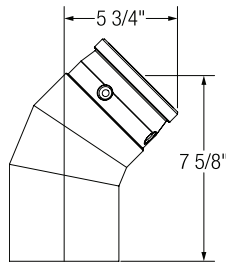
Adjustable Lengths

- Eliminates the need to field cut
- Adjustable up to 9 1/2" by simply sliding inside a UPP fixed length
- Features a factory installed O-ring
- Painted black or unpainted

PART #	PRODUCT CODE	FINISH	LENGTH
3" Diameter			
3UPP-12A	823007		Adj. 12"
3UPP-12AB	823007B	Black	Adj. 12"
4" Diameter			
4UPP-12A	824007		Adj. 12"
4UPP-12AB	824007B	Black	Adj. 12"



ELBOWS



45° Elbow

- Used as an offset around an obstruction
- Painted black or unpainted
- Can be used as a termination when accompanied by a Screen Cap

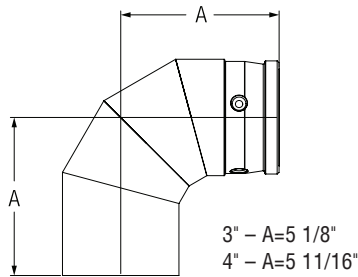
PART #	PRODUCT CODE	FINISH
--------	--------------	--------

3" Diameter

3UPP-45E	823008	
3UPP-45EB	823008B	Black

4" Diameter

4UPP-45E	824008	
4UPP-45EB	824008B	Black



90° Elbow

- Used as an offset around an obstruction
- Painted black or unpainted

PART #	PRODUCT CODE	FINISH
--------	--------------	--------

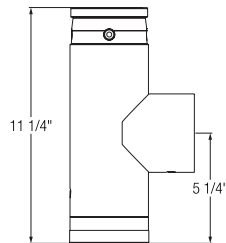
3" Diameter

3UPP-90E	823006	
3UPP-90EB	823006B	Black

4" Diameter

4UPP-90E	824006	
4UPP-90EB	824006B	Black

TEE COMPONENTS



Tee with Tee Cap

- Used to transition from horizontal to vertical orientation
- Provides easy access for inspection and maintenance
- Includes Tee Cap
- Painted black or unpainted

PART #	PRODUCT CODE	FINISH	DESCRIPTION
--------	--------------	--------	-------------

3" Diameter

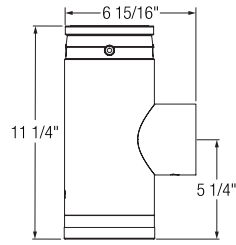
3UPP-T	823009		Tee w/Tee Cap
3UPP-TB	823009B	Black	
3UPP-TA	823022		Tee w/Tee Cap & Appliance Adapter
3UPP-TAB	823022B	Black	

4" Diameter

4UPP-T	824009		Tee w/Tee Cap
4UPP-TB	824009B	Black	
4UPP-TA	824022		Tee w/Tee Cap & Appliance Adapter
4UPP-TAB	824022B	Black	



TEE COMPONENTS (CONTINUED)



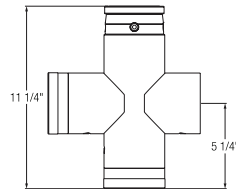
Increaser Tee with Tee Cap

- Used to transition from horizontal to vertical orientation
- Converts a 3" appliance to a 4" UPP system
- Provides easy access for inspection and maintenance
- Includes Tee Cap
- Painted black or unpainted

PART # PRODUCT CODE FINISH

3" Diameter

3UPP-IT	823023	
3UPP-ITB	823023B	Black



Double Tee with Tee Caps

- Used to transition from horizontal to vertical orientation
- Allows horizontal or vertical cleaning access and inspection
- Includes two Tee Caps
- Painted black or unpainted

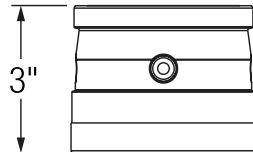
PART # PRODUCT CODE FINISH

3" Diameter

3UPP-DT	823018	
3UPP-DTB	823018B	Black

4" Diameter

4UPP-DT	824018	
4UPP-DTB	824018B	Black



Tee Cap

- Use as a replacement

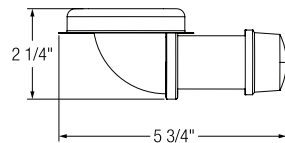
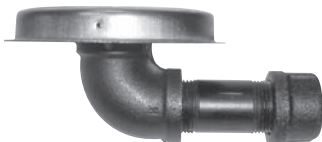
PART # PRODUCT CODE FINISH

3" Diameter

3UPP-TC	823016	
3UPP-TCB	823016B	Black

4" Diameter

4UPP-TC	824016	
4UPP-TCB	824016B	Black



Vacuum Clean-Out Cap

- Replaces the existing Tee Cap
- Used to clean the vent with no mess

PART # PRODUCT CODE

3" Diameter

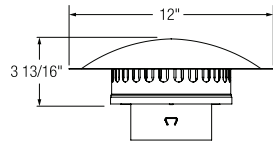
3UPP-VCC	823024	
----------	--------	--

4" Diameter

4UPP-VCC	824024	
----------	--------	--



RAIN CAPS



PART #	PRODUCT CODE
--------	--------------

3" Diameter

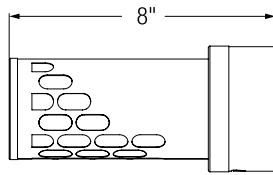
3UPP-VC	823014
---------	--------

4" Diameter

4UPP-VC	824014
---------	--------

Vertical Termination Cap

- Vent termination for a vertical, through-the-roof installation
- Designed to prevent rain and snow from entering the vent



PART #	PRODUCT CODE
--------	--------------

3" Diameter

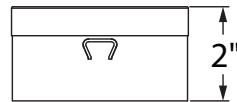
3UPP-HC	823020
---------	--------

4" Diameter

4UPP-HC	824020
---------	--------

Horizontal Termination

- Vent termination for a horizontal through-the-wall installation



PART #	PRODUCT CODE
--------	--------------

3" Diameter

3UPP-45T	823034
----------	--------

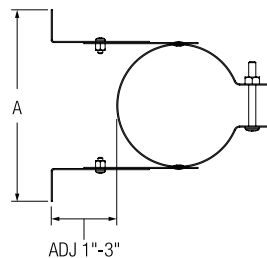
4" Diameter

4UPP-45T	824034
----------	--------

Screen Cap

- Must be used in conjunction with a 45° Elbow to serve as a horizontal termination

WALL BAND



PART #	PRODUCT CODE
--------	--------------

3" Diameter

3UPP-WB	823019
---------	--------

4" Diameter

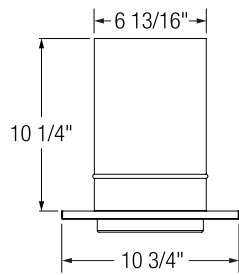
4UPP-WB	824019
---------	--------

Adjustable Wall Band

- Stabilize and support a vertical or horizontal run of pipe
- Clearance distance adjustable from 1" to 3"



CEILING SUPPORT



Ceiling Support

- Used to support UPP from below the ceiling joist
- Maintains 1" clearance to combustibles
- Trim plate is painted black

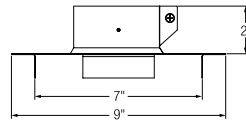
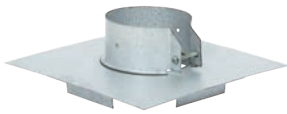
PART # PRODUCT CODE FINISH

3" Diameter

3UPP-CSB	823012	Black
----------	--------	-------

4" Diameter

4UPP-CSB	824012	Black
----------	--------	-------



Ceiling Support / Firestop

- Used to support UPP from above the ceiling joist
- Maintains 1" clearance to combustibles

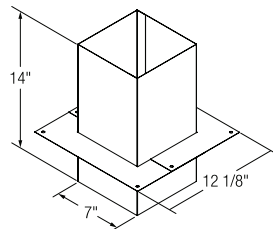
PART # PRODUCT CODE FINISH

3" Diameter

3UPP-FCS	823047	
----------	--------	--

4" Diameter

4UPP-FCS	824047	
----------	--------	--



Cathedral Ceiling Support

- Used to support UPP in a cathedral or sloped ceiling installation
- Maintains clearance to combustibles
- Painted black

PART # PRODUCT CODE FINISH

3" Diameter

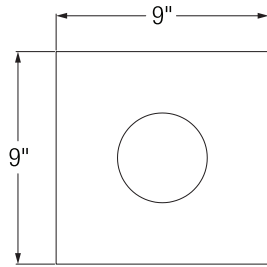
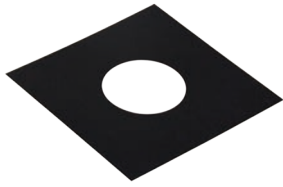
3UPP-CCS	823031	Black
----------	--------	-------

4" Diameter

4UPP-CCS	824031	Black
----------	--------	-------



TRIM COLLAR



PART #	PRODUCT CODE	FINISH
--------	--------------	--------

3" Diameter

3UPP-TP	823032	Black
---------	--------	-------

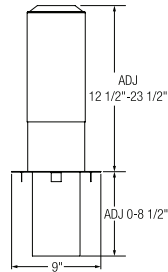
4" Diameter

4UPP-TP	824032	Black
---------	--------	-------

Trim Collar

- Finishing plate used at the ceiling level or on a sidewall
- Maintains clearance to combustibles
- Painted black

SHIELDS



PART #	PRODUCT CODE
--------	--------------

3" Diameter

3UPP-AIS	823010
----------	--------

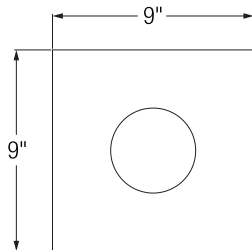
4" Diameter

4UPP-AIS	824010
----------	--------

Attic Insulation Shield

- Used in the attic to guard against the hazard of blown-in or blanket Insulation
- Maintains a 1" clearance to combustibles
- Adjust up to 23 1/2"
- Includes a drop-down joist shield to protect the joist area

FIRESTOP



PART #	PRODUCT CODE
--------	--------------

3" Diameter

3UPP-FS	823011
---------	--------

4" Diameter

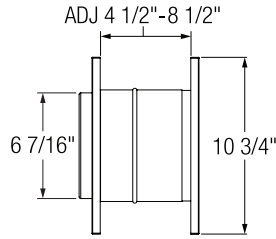
4UPP-FS	824011
---------	--------

Firestop

- Used to protect combustible materials where UPP passes through a ceiling
- Can also be used at the soffit level in an exterior installation



WALL THIMBLE



Wall Thimble

- Used in a combustible through-the-wall installation
- Maintains clearance to combustibles
- Adjustable for 4 1/2" to 8 1/2" thick walls
- Painted black

PART # PRODUCT CODE FINISH

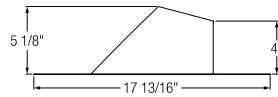
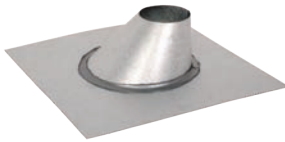
3" Diameter

3UPP-WTB	823013	Black
----------	--------	-------

4" Diameter

4UPP-WTB	824013	Black
----------	--------	-------

FLASHINGS



Adjustable Flashing

- Weatherproof the installation through a pitched roof
- For pitches of 0/12 to 6/12 and pitches of 6/12 to 12/12

PART # PRODUCT CODE PITCH

3" Diameter

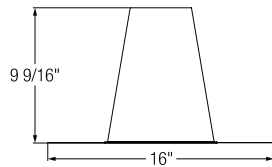
3UPP-F6	823035	1/12 to 6/12
---------	--------	--------------

3UPP-F12	823036	6/12 to 12/12
----------	--------	---------------

4" Diameter

4UPP-F6	824035	1/12 to 6/12
---------	--------	--------------

4UPP-F12	824036	6/12 to 12/12
----------	--------	---------------



Tall Cone Flashing

- Weatherproof the installation through a flat roof

PART # PRODUCT CODE

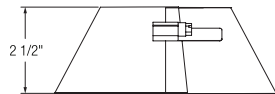
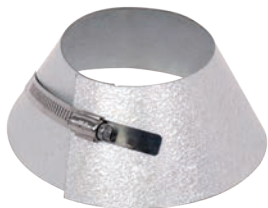
3" Diameter

3UPP-TF	823015
---------	--------

4" Diameter

4UPP-TF	824015
---------	--------

STORM COLLAR



Storm Collar

- Maintain a weather tight seal between the vent and the roof flashing
- Silicone must be applied (not included)

PART # PRODUCT CODE

3" Diameter

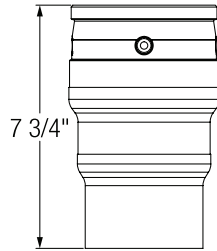
3UPP-SC	823021
---------	--------

4" Diameter

4UPP-SC	824021
---------	--------



ADAPTERS



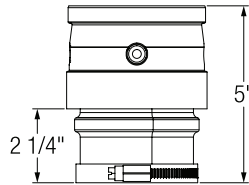
3" to 4" Increaser

- Transition from a 3" to a 4" UPP
- Painted black or unpainted

PART #	PRODUCT CODE	FINISH
--------	--------------	--------

3" Diameter

3UPP-I4	823025	
3UPP-I4B	823025B	Black



Appliance Adapter

- Attach to the appliance for connection to UPP

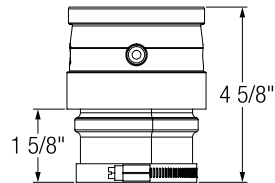
PART #	PRODUCT CODE	FINISH
--------	--------------	--------

3" Diameter

3UPP-AA	823017	
3UPP-AAB	823017B	Black

4" Diameter

4UPP-AA	824017	
4UPP-AAB	824017B	Black



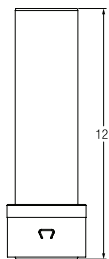
Multi-Fit Connector

- Adjustable, 3" appliance adapter
- Increases vent from 3" to 4"

PART #	PRODUCT CODE	FINISH
--------	--------------	--------

4" Diameter

4UPP-MFC	824055	
----------	--------	--



Masonry Adapter

- Adapt UPP to a masonry chimney

PART #	PRODUCT CODE
--------	--------------

3" Diameter

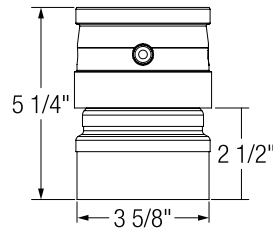
3UPP-MA	823033
---------	--------

4" Diameter

4UPP-MA	824033
---------	--------

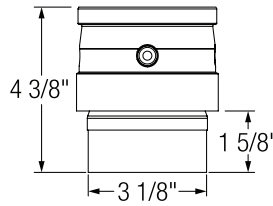


ADAPTERS (CONTINUED) **PART #** **PRODUCT CODE**



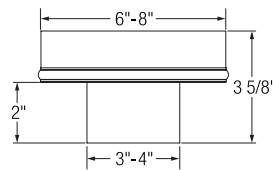
Harman Pipe Adapter - Outside

- Harman appliance outlet for easy pipe connection



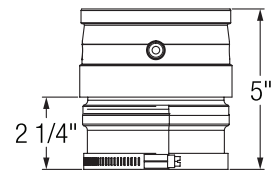
Harman Pipe Adapter - Inside

- Attaches a Harman appliance to UPP



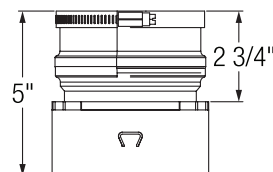
Chimney Adapter

- Transition from UPP to a Class A insulated chimney



Flex Connector

- Transition from a flexible stainless steel liner to UPP



Reverse Flex Connector

- Transition from UPP to a flexible stainless steel liner

3" Diameter	
3UPP-HAA1	823028

PART #	PRODUCT CODE
3" Diameter	
3UPP-HAA2	823029

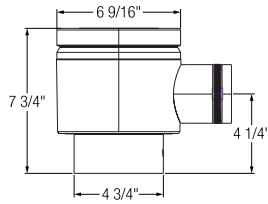
PART #	PRODUCT CODE	SIZE
3" Diameter		
3UPP-CA6	823038	6"
3UPP-CA8	823039	8"
4" Diameter		
4UPP-CA6	824038	6"
4UPP-CA8	824039	8"

PART #	PRODUCT CODE
4" Diameter	
4UPP-FC	824026

PART #	PRODUCT CODE
4" Diameter	
4UPP-FCR	824027



ADAPTERS (CONTINUED)



PART #	PRODUCT CODE
--------	--------------

4" Diameter

4UPP-DTA	824037
----------	--------

Direct-Temp Adapter

- Transition from UPP pipe to Direct-Temp direct vent system



PART #	PRODUCT CODE
--------	--------------

4" Diameter

4DT-UPPSAL	1604840
------------	---------

Low Profile Direct-Temp Adapter

- Transition from UPP to Direct-Temp system
- Fresh air intake nozzle
- 3/4" Shorter than 4UPP-DTA



PART #	PRODUCT CODE
--------	--------------

4" Diameter

4DT-UPPSA45	1604841
-------------	---------

45° Direct-Temp Adapter

- Transition from UPP to Direct-Temp system
- Adjustable fresh air intake nozzle (3 positions)

MISCELLANEOUS

PART #	SIZE
--------	------

7001 SIL	Single Use Lubricant Packet
----------	-----------------------------

7001 SIL-5	5oz. Lubricant Tube
------------	---------------------



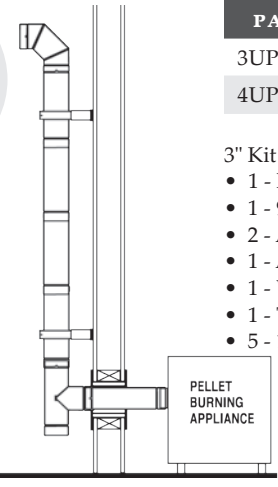
Lubricant

- To lubricate UPP gaskets for easier assembly and dismantling



PELLET PIPE KITS

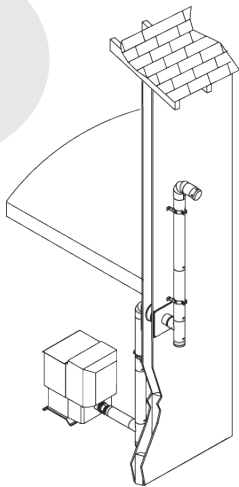
THROUGH THE WALL KIT



PART #	PRODUCT CODE	SIZE
3UPP-TWK	823044	3" Kit
4UPP-TWK	824044	4" Kit

- 3" Kit Contains:**
- 1 - Horizontal Termination (3")
 - 1 - 90° Elbow (3")
 - 2 - Adjustable Wall Band (3")
 - 1 - Appliance Adapter (3")
 - 1 - Wall Thimble (3")
 - 1 - Tee with Tee Cap (3")
 - 5 - 12" Pipe Length (3")
- 4" Kit Contains:**
- 1 - Horizontal Termination (4")
 - 1 - 90° Elbow (4")
 - 2 - Adjustable Wall Band (4")
 - 1 - Appliance Adapter (3")
 - 1 - Appliance Adapter (4")
 - 1 - 3" to 4" Increaser
 - 1 - Wall Thimble (4")
 - 1 - Tee with Tee Cap (4")
 - 5 - 12" Pipe Length (4")

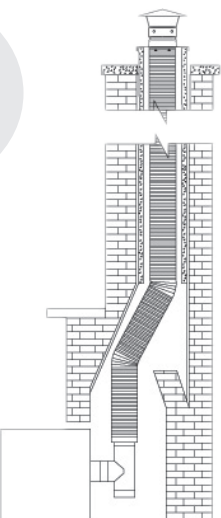
BASEMENT KIT



PART #	PRODUCT CODE	SIZE
4UPP-BK	824045	4" Kit

- 4" Kit Contains:**
- 1 - Horizontal Termination (4")
 - 1 - Appliance Adapter (3")
 - 1 - Appliance Adapter (4")
 - 1 - 3" to 4" Increaser
 - 1 - Wall Thimble (4")
 - 2 - Tee with Tee Cap (4")
 - 3 - Adjustable Wall Band (4")
 - 2 - 90° Elbow (4")
 - 2 - 12" Pipe Length (4")
 - 4 - 24" Pipe Length (4")

INSERT FLEX KIT



PART #	PRODUCT CODE	SIZE
4UPP-IK25	824042	25' Kit
4UPP-IK35	824043	35' Kit

- 25' Kit Contains:**
- 1 - 25' of 4" Stainless Flex
 - 1 - Increaser Tee w/Tee Cap (4")
 - 1 - Reverse Flex Connector (4")
 - 1 - 4" Termination Cap
 - 1 - 4" Flex Flashing Connector
 - 1 - 4" Flashing/Support
 - 1 - Appliance Adapter 3"
 - 1 - Silicone Sealant
- 35' Kit Contains:**
- 1 - 35' of 4" Stainless Flex
 - 1 - Increaser Tee with Tee Cap (4")
 - 1 - Reverse Flex Connector (4")
 - 1 - 4" Termination Cap
 - 1 - 4" Flex Flashing Connector
 - 1 - 4" Flashing/Support
 - 1 - Appliance Adapter 3"
 - 1 - Silicone Sealant



The AmeriVent Model DCC Double-Wall Stovepipe is designed for use with AmeriVent chimney systems. Model DCC is UL-listed for minimum airspace clearance to combustibles of 6" to the rear and side walls, 8" to ceilings.



Intertek

Construction Features

- UL-listed for 1000° continuous operation
- Stainless steel inner liner
- Air-insulated, double-wall design
- Painted Black
- Easy to inspect
- Easy to install
- Screw joint assembly
- Drip-free design to prevent creosote leakage
- Components individually wrapped in plastic sleeves

*Note: -A Stovepipe Adapter is required to attach Double-Wall Chimney (DCC) to Model HS/HSS/TD Chimney
-Look in the respective Chimney sections for proper Stovepipe Adapter*



STOVEPIPE LENGTHS



Stovepipe Length

- Stainless steel inner liners
- Easy to install and disassemble; screw-joint assembly
- 1 ¼" overlap at joints

PART #	PRODUCT CODE	LENGTH	I.D.	O.D.
--------	--------------	--------	------	------

6" Diameter

6DCC-6-BK	887005	6"	6"	7"
6DCC-12-BK	887000	12"	6"	7"
6DCC-18-BK	887032	18"	6"	7"
6DCC-24-BK	887003	24"	6"	7"
6DCC-36-BK	887034	36"	6"	7"
6DCC-48-BK	887036	48"	6"	7"

8" Diameter

8DCC-6-BK	887015	6"	8"	9"
8DCC-12-BK	887016	12"	8"	9"
8DCC-18-BK	887046	18"	8"	9"
8DCC-24-BK	887019	24"	8"	9"
8DCC-36-BK	887048	36"	8"	9"
8DCC-48-BK	887050	48"	8"	9"



Adjustable Stovepipe Length

- 6" length section slips over pipe section for adjustments from 2 ½" to 5"
- 12" length section slips over pipe section for adjustments from 3" to 9"
- 18" length section slips over pipe section for adjustments from 3" to 15"

PART #	PRODUCT CODE	LENGTH	I.D.	O.D.
--------	--------------	--------	------	------

6" Diameter

6DCC-6A-BK	887006	6"	6"	7"
6DCC-12A-BK	887002	12"	6"	7"
6DCC-18A-BK	887001	18"	6"	7"

8" Diameter

8DCC-6A-BK	887021	6"	8"	9"
8DCC-12A-BK	887018	12"	8"	9"
8DCC-18A-BK	887017	18"	8"	9"



Two-Piece Telescoping Section

- Telescopes between stove and supports for adjustments from 3 ½' to 5 ½'

PART #	PRODUCT CODE	LENGTH	I.D.	O.D.
--------	--------------	--------	------	------

6" Diameter

6DCC-TS5-BK	887013	3 ½' to 5 ½'	6"	7"
-------------	--------	--------------	----	----

8" Diameter

8DCC-TS5-BK	887029	3 ½' to 5 ½'	8"	9"
-------------	--------	--------------	----	----



MODEL DCC DOUBLE WALL STOVEPIPE

ELBOWS



30° Elbow

- Fixed 30° Elbow is used to offset connector pipe toward the insulated chimney system

PART #	PRODUCT CODE	A	B
6" Diameter			
6DCC-30-BK	887063	3 1/16"	4 1/16"
8" Diameter			
8DCC-30-BK	887083	3 1/16"	4 1/16"



45° Elbow

- Fixed 45° Elbow is used to offset connector pipe toward the insulated chimney system

PART #	PRODUCT CODE	A	B
6" Diameter			
6DCC-45-BK	887004	9 1/4"	10"
8" Diameter			
8DCC-45-BK	887020	11 1/4"	12"

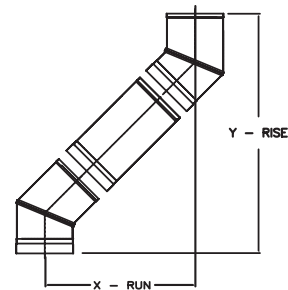


90° Elbow

- Fixed 90° Elbow is used to offset connector pipe toward the insulated chimney system

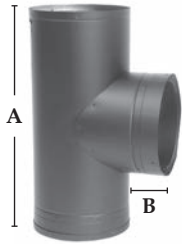
PART #	PRODUCT CODE	A	B
6" Diameter			
6DCC-90-BK	887008	9 1/4"	10"
8" Diameter			
8DCC-90-BK	887023	11 1/4"	12"

	PIPE LENGTH	X - RUN	Y - RUN
6" Diameter DCC (2) 45° Elbows	0"	5 1/2"	13 1/4"
	12"	13 1/16"	20 13/16"
	18"	17 5/16"	25 1/16"
	24"	21 1/2"	29 5/16"
	36"	30"	37 3/4"
8" Diameter DCC (2) 45° Elbows	0"	6 7/8"	16 5/8"
	12"	14 1/2"	24 1/4"
	18"	18 3/4"	28 1/2"
	24"	23"	32 3/4"
	36"	31 1/2"	41 3/16"
	48"	39 13/16"	49 11/16"





TEE COMPONENTS



PART #	PRODUCT CODE	A	B
6" Diameter			
6DCC-T-BK	887012	16"	3"
8" Diameter			
8DCC-T-BK	887028	17"	3"

Tee with Tee Cap

- Used where stovepipe connection is made at the rear of the appliance

ADAPTERS



PART #	PRODUCT CODE	A
6" Diameter		
6XDCC-7	453086	6" to 7"
6XDCC-8-BK	887014	6" to 8"

Increaser

- Used at either the top or bottom of DCC stovepipe to increase a 6" DCC to an 8" DCC.
- The 6XDCC-7 to be used at the top of DCC stovepipe to increase the 6" DCC to a 7" chimney system



PART #	PRODUCT CODE	LENGTH
6" Diameter		
6DCC-SA-BK	887011	6"
8" Diameter		
8DCC-SA-BK	887027	6"

Stove Adapter

- 6" high adapter even fits over tall stove collars



MODEL DCC DOUBLE WALL STOVEPIPE

ADAPTERS (CONTINUED)



Double Wall Connector Kit

The kit includes:

- Two 24" pipe sections
- One 18" adjustable length pipe section
- One stove adapter

Kits are available in 6" and 8" sizes to accommodate vertical installations up to 66"

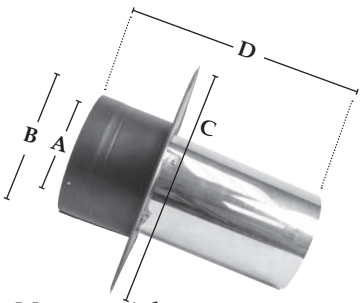
PART #	PRODUCT CODE
6" Diameter	
6DCC-K-BK	887009
8" Diameter	
8DCC-K-BK	887025



Oval-to-Round Adapter

- Used to convert 8" Oval Flue outlets to 8" Round DCC Stovepipe
- Secure with screws

PART #	PRODUCT CODE	A	B	C
8" Diameter				
8DCC-ORA-BK	887026	9 ¼"	12 ½"	10"



Masonry Adapter

- For installations through a masonry wall
- Used to connect Double Wall Stovepipe to an existing masonry chimney or a relined masonry chimney with stainless steel liner

PART #	PRODUCT CODE	A	B	C	D
6" Diameter					
6DCC-MA	887051	6"	7"	14"	13 ⅝"
8" Diameter					
8DCC-MA	887053	8"	9"	14"	13 ⅝"



UNIVERSAL FINISHING BAND	PART #	PRODUCT CODE	SIZE	PACK
	DCC-FB-BK	887052	All	1



Universal Finishing Band

- Used to conceal the connecting joint at the chimney adapter

MISCELLANEOUS	PART #
	AVD-PTU

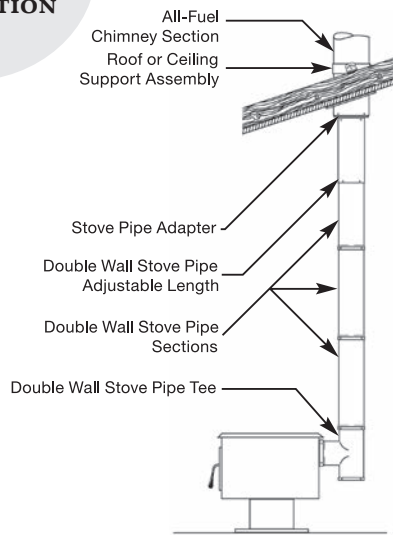


Black Touch-Up Paint

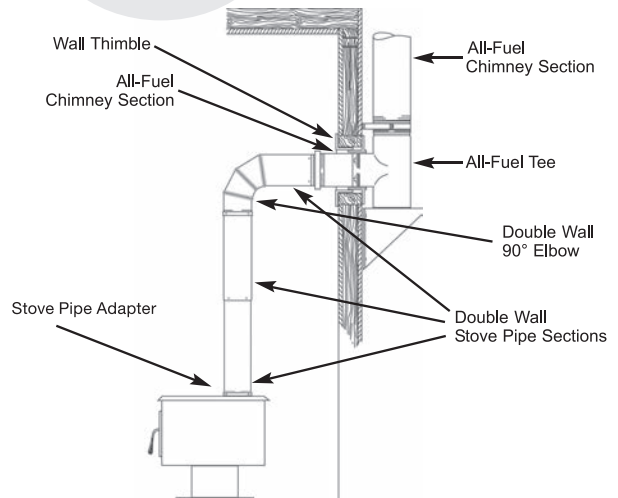
- Forrest Stove Bright 1A54H206

TYPICAL AMERIVENT SUPPORT INSTALLATIONS

VERTICAL SUPPORT INSTALLATION



WALL SUPPORT INSTALLATION





Ultimate StovePipe™

All-Fuel, Double Wall Chimney Connector System

MODEL USP DOUBLE-WALL STOVEPIPE

Ultimate StovePipe is designed to provide optimal wood stove performance and has a sleek, smooth, clean-look to compliment any stove and home.

Double wall stovepipe is the best choice to connect a freestanding stove to a chimney system. In comparison to single wall stovepipe, it offers:

- Reduces clearance to combustible materials, 6" versus 18"
- Reduces creosote formation
- Enhances Draft

FEATURES

- Smooth, clean appearance on all components - pipe lengths, elbows and tees - to compliment any stove & home interior
- Sleek, smooth, clean-looking welded seams on inner and outer
- Satin coat steel 0.018" outer casing specifically designed for optimum paint adhesion and scratch resistance
- Stainless steel inner liner warms quickly, holds the heat in and improves efficiency
- Air-insulated, double wall design - approximately 7/16" air space
 - Provides better insulation & heat retention
 - Allows flue to warm up quickly to establish strong draft
 - Reduces moisture to minimize creosote build-up & minimize maintenance
- Joints secured with screws for easy assembly and inspection
- Pre-drilled pilot holes for fast installation
- Faster start-ups lead to less smoke & less pollution in the environment
- Maintains higher flue-gas temperatures
- Results in lower outer surface temperature
- Easily fits most stoves, including cast iron stoves and stoves with oval collars
- Drip-free design to prevent creosote leakage
- Components individually packed
- Smart Choice Warranty



CERTIFICATION

- Tested & certified to CAN/ULC-S641 (Canada) and temperature requirements of UL 103 TYPE HT (USA)
- 6" clearance to combustibles in all diameters - even when installed in a corner, or parallel with a ceiling
- NOTE - Always consult the stove manufacturer's installation instructions for installation requirements



Forrest Stove Bright Metallic Black #6309

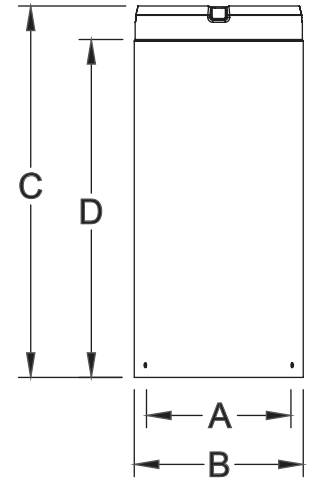


LENGTHS

LENGTHS

- 6", 7", and 8" diameters
- 6", 12", 18", 24", 36", and 48" lengths
- Easy to install and disassemble
- Hardware pack included

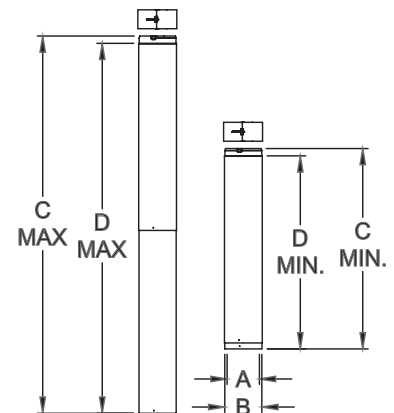
Size	Product Number	Part Number	A	B	C	D
6"	276006	6USP-L6	6"	6 7/8"	6"	4 5/8"
6"	276012	6USP-L12	6"	6 7/8"	12"	10 5/8"
6"	276018	6USP-L18	6"	6 7/8"	18"	16 5/8"
6"	276024	6USP-L24	6"	6 7/8"	24"	22 5/8"
6"	276036	6USP-L36	6"	6 7/8"	36"	34 5/8"
6"	276048	6USP-L48	6"	6 7/8"	48"	46 5/8"
7"	277006	7USP-L6	7"	7 7/8"	6"	4 5/8"
7"	277012	7USP-L12	7"	7 7/8"	12"	10 5/8"
7"	277018	7USP-L18	7"	7 7/8"	18"	16 5/8"
7"	277024	7USP-L24	7"	7 7/8"	24"	22 5/8"
7"	277036	7USP-L36	7"	7 7/8"	36"	34 5/8"
7"	277048	7USP-L48	7"	7 7/8"	48"	46 5/8"
8"	278006	8USP-L6	8"	8 7/8"	6"	4 5/8"
8"	278012	8USP-L12	8"	8 7/8"	12"	10 5/8"
8"	278018	8USP-L18	8"	8 7/8"	18"	16 5/8"
8"	278024	8USP-L24	8"	8 7/8"	24"	22 5/8"
8"	278036	8USP-L36	8"	8 7/8"	36"	34 5/8"
8"	278048	8USP-L48	8"	8 7/8"	48"	46 5/8"



TELESCOPIC LENGTHS

- 6", 7", and 8" diameters
- Two-piece telescoping section comprised of (1) 36" Length and (1) 36" Adjustable Length
- Provides installation flexibility from stove to the chimney system
- Wide Finishing Band included
- Hardware pack included

Size	Product Number	Part Number	A	B	C MIN	C MAX	D MIN	D MAX
6"	276066	6USP-TL	6"	6 7/8"	39 1/4"	72"	35 3/4"	68 1/2"
7"	277066	7USP-TL	7"	7 7/8"				
8"	278066	8USP-TL	8"	8 7/8"				

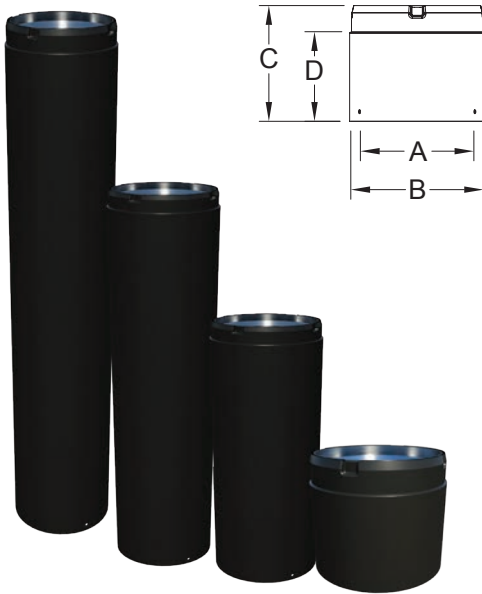




ADJUSTABLE LENGTHS

ADJUSTABLE LENGTHS

- 6", 7", and 8" diameters
- 6", 12", 18" and 36" adjustable lengths
- Adjustable Lengths slide over any regular length for installation flexibility
- Adjustable Lengths may be used as a Stove Adapter
- Use in a vertical and/or horizontal installation
- Hardware pack included

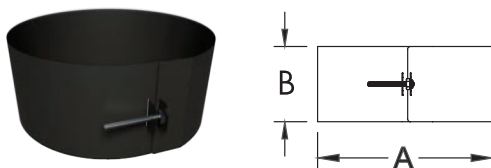


Size	Product Number.	Part Number	A	B	C	D (MIN)	D (MAX)
6"	276004	6USP-AL6	6"	6 7/8"	6"	2"	4"
6"	276010	6USP-AL12	6"	6 7/8"	12"	2"	10"
6"	276016	6USP-AL18	6"	6 7/8"	18"	2"	16"
6"	276034	6USP-AL36	6"	6 7/8"	36"	2"	34"
7"	277004	7USP-AL6	7"	7 7/8"	6"	2"	4"
7"	277010	7USP-AL12	7"	7 7/8"	12"	2"	10"
7"	277016	7USP-AL18	7"	7 7/8"	18"	2"	16"
7"	277034	7USP-AL36	7"	7 7/8"	36"	2"	34"
8"	278004	8USP-AL6	8"	8 7/8"	6"	2"	4"
8"	278010	8USP-AL12	8"	8 7/8"	12"	2"	10"
8"	278016	8USP-AL18	8"	8 7/8"	18"	2"	16"
8"	278034	8USP-AL36	8"	8 7/8"	36"	2"	34"

FINISHING BANDS

WIDE FINISHING BANDS

- 6", 7", and 8" diameters
- Use to conceal & finish connection between Ultimate StovePipe at ceiling support or in a through the wall application
- Can also be used to conceal the connecting joint at the chimney adapter
- Hardware pack included



Size	Product Number	Part Number	A	B
6"	276261	6USP-WFB	6 7/8"	3 1/2"
7"	277261	7USP-WFB	7 7/8"	
8"	278261	8USP-WFB	8 7/8"	

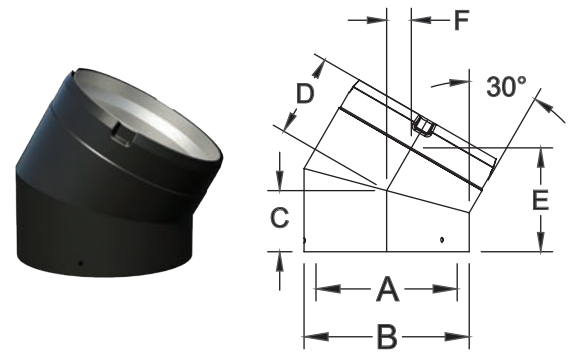


ELBOWS

30° ELBOWS

- 6", 7", and 8" diameters
- Use fixed 30° elbow to offset flue as needed
- Non-positional connection system allows 360° rotation
- Hardware pack included

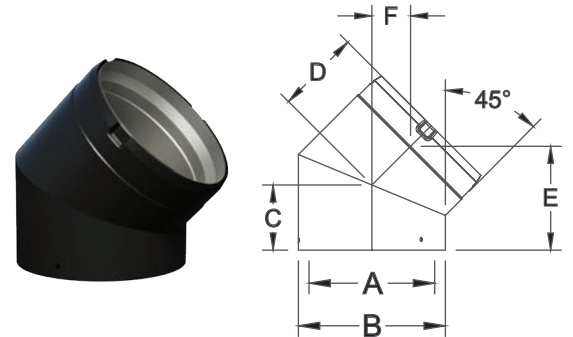
Size	Product Number	Part Number	A	B	C	D	E	F
6"	276211	6USP-E30	6"	6 7/8"	2 1/2"	3 1/2"	4 1/4"	1"
7"	277211	7USP-E30	7"	7 7/8"	2 5/8"	3 5/8"	4 1/2"	1 1/8"
8"	278211	8USP-E30	8"	8 7/8"	2 3/4"	3 3/4"	4 3/4"	1 1/8"



45° ELBOWS

- 6", 7", and 8" diameters
- Use fixed 45° elbow to offset flue as needed
- Non-positional connection system allows 360° rotation
- Hardware pack included

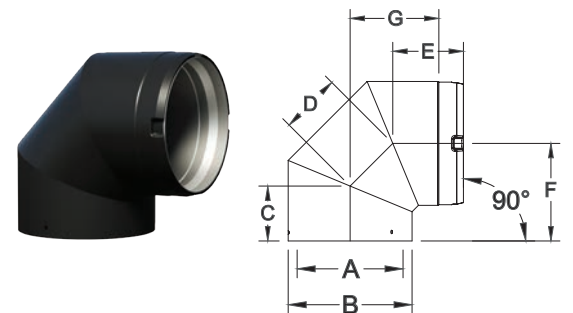
Size	Product Number	Part Number	A	B	C	D	E	F
6"	276215	6USP-E45	6"	6 7/8"	3"	3 7/8"	4 7/8"	1 3/4"
7"	277215	7USP-E45	7"	7 7/8"	3 1/4"	4 1/8"	5 1/4"	2"
8"	278215	8USP-E45	8"	8 7/8"	3 1/2"	4 3/8"	5 5/8"	2 1/8"



90° ELBOWS

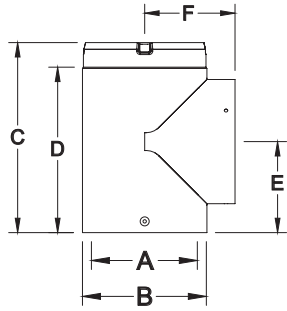
- 6", 7", and 8" diameters
- Use fixed 90° elbow to offset flue as needed, or in a through-the-wall installation
- Non-positional connection system allows 360° rotation
- Hardware pack included

Size	Product Number	Part Number	A	B	C	D	E	F	G
6"	276230	6USP-E90	6"	6 7/8"	3"	3 3/8"	4"	5 3/8"	4 7/8"
7"	277230	7USP-E90	7"	7 7/8"	3 1/4"	3 3/4"	4 1/8"	5 7/8"	5 3/8"
8"	278230	8USP-E90	8"	8 7/8"	3 1/2"	4 1/4"	4 3/8"	6 3/8"	5 7/8"





TEES

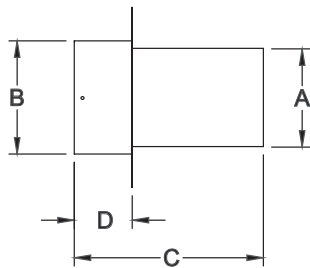
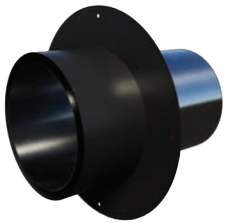


TEES

- 6", 7", and 8" diameters
- Includes Tee Cap for easy inspection & cleaning access
- Hardware pack included

Size	Product Number	Part Number	A	B	C	D	E	F
6"	276100	6USP-T	6"	6 7/8"	10 5/8"	9 1/4"	5 1/8"	5 1/8"
7"	277100	7USP-T	7"	7 7/8"	11 5/8"	10 1/4"	5 5/8"	5 5/8"
8"	278100	8USP-T	8"	8 7/8"	12 5/8"	11 1/4"	6 1/8"	6 1/8"

MASONRY ADAPTERS

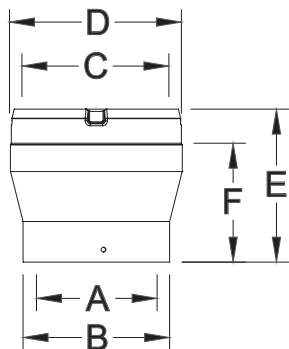


MASONRY ADAPTERS

- 6", 7", and 8" diameters
- For installations through a masonry wall
- Use to connect Ultimate StovePipe to an existing masonry chimney or a relined masonry chimney with stainless steel liner
- Hardware pack included

Size	Product Number	Part Number	A	B	C	D
6"	276247	6USP-MA	6"	6 7/8"	11 1/2"	3 1/2"
7"	277247	7USP-MA	7"	7 7/8"		
8"	278247	8USP-MA	8"	8 7/8"		

INCREASERS



INCREASERS

- 4 Sizes - 5" to 6", 6" to 7", 6" to 8" and 7" to 8"
- Use to increase to a larger diameter chimney system
- Hardware pack included

Note: Increasing the diameter may reduce draft and increase creosote build-up.

Size	Product Number	Part Number	A	B	C	D	E	F
5" to 6"	275306	5USP-IN6	5"	5 7/8"	6"	6 7/8"	6 1/8"	4 3/4"
6" to 7"	276307	6USP-IN7	6"	6 7/8"	7"	7 7/8"	6 1/8"	4 3/4"
6" to 8"	276308	6USP-IN8	6"	6 7/8"	8"	8 7/8"	8 1/8"	6 3/4"
7" to 8"	277308	7USP-IN8	7"	7 7/8"	8"	8 7/8"	6 1/8"	4 3/4"

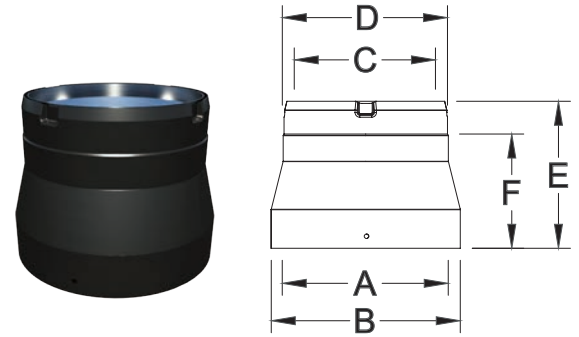


REDUCERS

REDUCERS

- 3 sizes - 7" to 6", 8" to 7", and 8" to 6"
- Use to reduce the diameter of the system to accommodate a range of flue sizes
- Hardware pack included

Note: Check with appliance manufacturer or local code authorities for acceptable use.

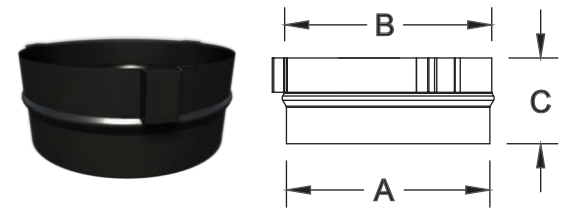


Size	Product Number	Part Number	A	B	C	D	E	F
7" to 6"	277366	7USP-RE6	7"	7 7/8"	6"	6 7/8"	6 1/8"	4 3/4"
8" to 6"	278366	8USP-RE6	8"	8 7/8"	6"	6 7/8"	8 1/8"	6 3/4"
8" to 7"	278367	8USP-RE7	8"	8 7/8"	7"	7 7/8"	6 1/8"	4 3/4"

LOW PROFILE STOVE ADAPTERS

LOW PROFILE STOVE ADAPTERS

- 6", 7", and 8" diameters
- Use to connect Ultimate StovePipe to a flush, recessed or standard appliance outlet
- Pair with an Adjustable Length to conceal the Low Profile Adapter & create a seamless look



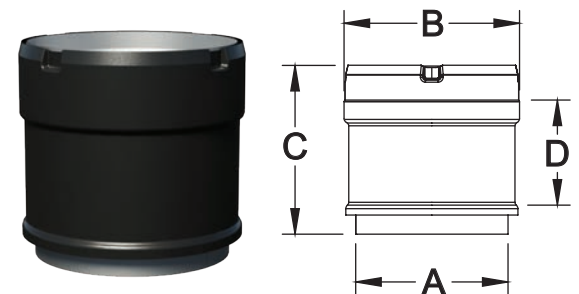
Size	Product Number	Part Number	A	B	C
6"	276249	6USP-LPSA	5 15/16"	6"	2 1/2"
7"	277249	7USP-LPSA	6 15/16"	7"	
8"	278249	8USP-LPSA	7 15/16"	8"	

JOTUL STOVE ADAPTER

JOTUL STOVE ADAPTER

- 6" diameter
- Use to convert Jotul flue outlets to Ultimate StovePipe

Size	Product Number	Part Number	A	B	C	D
6"	276245	6USP-SAJOTUL	6"	6 7/8"	6 5/8"	4 1/4"

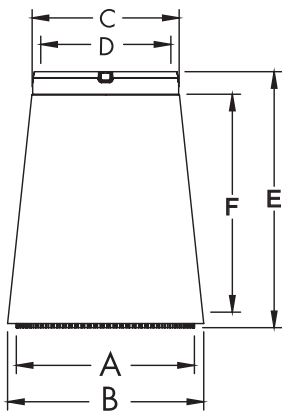




OVAL-TO-ROUND ADAPTERS

OVAL-TO-ROUND ADAPTERS

- 8" oval diameters
- Use to convert Oval flue outlets to round Ultimate StovePipe
- Hardware pack included

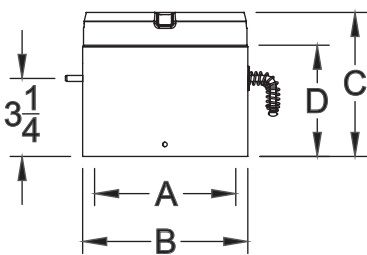


Size	Product Number	Part Number	A	B	C	D	E	F
8" to 8"	278250	8USP-ORA	6" x 10 5/8"	6 3/4" x 11 1/2"	8"	8 7/8"	15 1/4"	12 7/8"
8" to 6"	278251	8USP-ORA6	6" x 10 5/8"	6 3/4" x 11 1/2"	6"	6 7/8"		

IN-LINE DAMPERS

IN-LINE DAMPERS

- 6", 7", and 8" diameters
- Use to control the air being drawn through the chimney and to control the stove's combustion
- Designed to be installed in a vertical run 2 to 3 feet above the stove
- Hardware pack included



Note: Check with appliance manufacturer for recommended use.

Size	Product Number	Part Number	A	B	C	D
6"	276260	6USP-DK	6"	6 7/8"	6"	4 5/8"
7"	277260	7USP-DK	7"	7 7/8"		
8"	278260	8USP-DK	8"	8 7/8"		



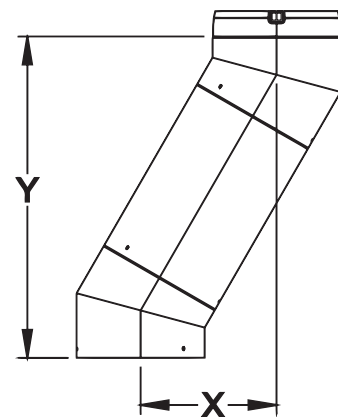
ELBOW OFFSET CHART

30° Elbow - 2x E30 with 1x Length				45° Elbow - 2x E45 with 1x Length				90° Elbow - 2x E90 with 1x Length			
Size	Pipe Length	X - Offset	Y - Rise	Size	Pipe Length	X - Offset	Y - Rise	Size	Pipe Length	X - Offset	Y - Rise
6"	0"	2 1/4"	8 5/8"	6"	0"	4"	9 1/2"	6"	0"	10 3/8"	10 3/8"
	6"	4 5/8"	12 5/8"		6"	7 1/4"	12 3/4"		6"	15"	
	12"	7 1/2"	17 7/8"		12"	11 1/2"	17"		12"	21"	
	18"	10 1/2"	23"		18"	15 3/4"	21 1/4"		18"	27"	
	24"	13 1/2"	28 1/4"		24"	20"	25 1/2"		24"	33"	
	36"	19 1/2"	38 5/8"		36"	28 1/2"	34"		36"	45"	
	48"	25"	48 1/8"		48"	36 1/4"	41 3/4"		48"	56"	
7"	0"	2 3/8"	9 1/8"	7"	0"	4 1/4"	10 1/4"	7"	0"	11 3/8"	11 3/8"
	6"	4 3/4"	13 1/8"		6"	7 1/2"	13 1/2"		6"	16"	
	12"	7 5/8"	18 3/8"		12"	11 3/4"	17 3/4"		12"	22"	
	18"	10 5/8"	23 1/2"		18"	16"	22"		18"	28"	
	24"	13 5/8"	28 3/4"		24"	20 1/4"	26 1/4"		24"	34"	
	36"	19 5/8"	39 1/8"		36"	28 3/4"	34 3/4"		36"	46"	
	48"	25 1/8"	48 5/8"		48"	36 1/2"	42 1/2"		48"	57"	
8"	0"	2 5/8"	9 5/8"	8"	0"	4 1/2"	11"	8"	0"	12 3/8"	12 3/8"
	6"	5"	13 5/8"		6"	7 3/4"	14 1/4"		6"	17"	
	12"	7 7/8"	18 7/8"		12"	12"	18 1/2"		12"	23"	
	18"	10 7/8"	24"		18"	16 1/4"	22 3/4"		18"	29"	
	24"	13 7/8"	29 1/4"		24"	20 1/2"	27"		24"	35"	
	36"	19 7/8"	39 5/8"		36"	29"	35 1/2"		36"	47"	
	48"	25 3/8"	49 1/8"		48"	36 3/4"	43 1/4"		48"	58"	

30° Elbow - 2x E30 with 1x Telescopic Length						
Size	Telescopic Length		X - Offset		Y - Rise	
	MIN	MAX	MIN	MAX	MIN	MAX
6"	35 3/4"	68 1/8"	20 1/8"	36 1/4"	39 5/8"	67 5/8"
7"	35 3/4"	68 1/8"	20 1/4"	36 3/8"	40 1/8"	68 1/8"
8"	35 3/4"	68 1/8"	20 1/2"	36 5/8"	40 5/8"	68 5/8"

45° Elbow - 2x E45 with 1x Telescopic Length						
Size	Telescopic Length		X - Offset		Y - Rise	
	MIN	MAX	MIN	MAX	MIN	MAX
6"	35 3/4"	68 1/8"	29 1/4"	52 1/8"	34 3/4"	57 5/8"
7"	35 3/4"	68 1/8"	29 1/2"	52 3/8"	35 1/2"	58 3/8"
8"	35 3/4"	68 1/8"	29 3/4"	52 5/8"	36 1/4"	59 1/8"

90° Elbow - 2x E90 with 1x Telescopic Length						
Size	Telescopic Length		X - Offset		Y - Rise	
	MIN	MAX	MIN	MAX	MIN	MAX
6"	35 3/4"	68 1/8"	46 1/8"	78 1/2"	10 3/8"	
7"	35 3/4"	68 1/8"	47 1/8"	79 1/2"	11 3/8"	
8"	35 3/4"	68 1/8"	48 1/8"	80 1/2"	12 3/8"	





TYPICAL INSTALLATIONS

MASONRY INSTALLATION



CLEANOUT INSTALLATION



STRAIGHT-UP INSTALLATION



THROUGH THE WALL INSTALLATION





BUILD FOR THE FUTURE

Customer Service and Support:

Airmate (USA).....	800.992.8368
Airmate (CAN)	888.735.5475
Ameriflow	800.252.8467
Amerivent (Retail).....	800.252.8467
Amerivent (Hearth & Wholesale)	800.423.4270
Amerivent (Support).....	800.748.0392
AMPCO (USA)	800.669.3269
AMPCO (CAN).....	888.735.5475
Duravent	800.835.4429
Hart & Cooley.....	800.433.6341
Hart & Cooley (Support)	800.748.0392
Heatfab (USA).....	800.772.0739
Heatfab (CAN)	800.848.2149
Lima.....	800.423.4270
Milcor	800.774.5240
Portals Plus.....	800.774.5240
RPS.....	800.624.8642
Security Chimney (USA).....	800.361.4909
Security Chimney (CAN)	800.667.3387
Selkirk (USA) Residential	800.992.8368
Selkirk (USA) Commercial.....	800.848.2149
Selkirk (USA) Support.....	800.748.0392
Selkirk (CAN)	888.735.5475

Manufacturing & Distribution Centers:

CANADA	
Nobel, ON	Manufacturing
Laval, QC	Manufacturing
Prescott, ON	Distribution
USA	
Grand Rapids, MI	Center of Excellence
Dallas, TX	Distribution
Englewood, OH	Distribution
Huntsville, AL	Manufacturing & Distribution
Mira Loma, CA	Distribution
Nampa, ID	Manufacturing & Distribution
Turner Falls, MA	Manufacturing & Distribution
Vacaville, CA	Manufacturing
MEXICO	
Ojinaga, MX	Manufacturing
Mexicali, MX	Manufacturing

Corporate Headquarters:

Duravent Group
 28 W. Adams, Suite 1810
 Detroit, MI 48226
 Tel: 800.835.4429
 Email: info@duraventgroup.com
www.duraventgroup.com

duravent[™]
GROUP

BUILD FOR THE FUTURE

www.duraventgroup.com



For warranty information:
Scan this QR code or visit
www.duraventgroup.com/warranties