

**SUBMITTAL DRAWING**

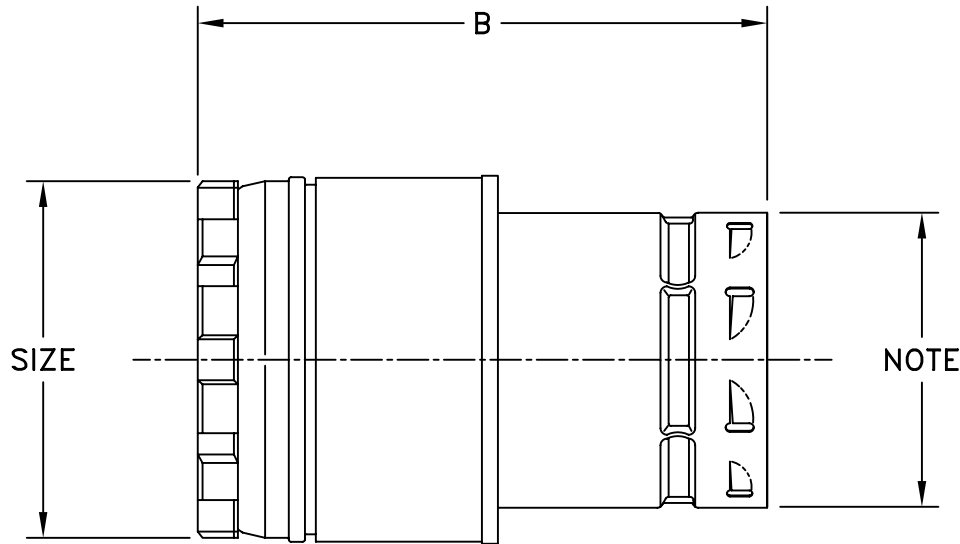
DATE: 05/03/05

SUBMITTED BY:

JOB NAME: \_\_\_\_\_  
 LOCATION: \_\_\_\_\_  
 ARCHITECT: \_\_\_\_\_  
 ENGINEER: \_\_\_\_\_  
 CONTRACTOR: \_\_\_\_\_

**Type B Gas Vent**  
 INCREASER  
 3"-30" DIAMETER

DRAWING #: B3-6



PART NO.	SIZE	LENGTH B
*EIX4	4"	6"
*EIX5	5"	6"
*EIX6	6"	6"
*EIX7	7"	6"
*RIX8	8"	6"
*RIX9	9"	7"
*RIX10	10'	7"
*RIX12	12"	7"
*RIX14	14"	7"
*RIX16	16"	6"
*RIX18	18"	6"
*RIX20	20"	6"
*RIX22	22"	6"
*RIX24	24"	6"
*RIX26	26"	7"
*RIX28	28"	7"
*RIX30	30"	7"

NOTE:

\* ADD SMALLER SIZE TO COMPLETE PART NO.



• MATERIAL

OUTER – MIN., .018 THICK, GALVANIZED STEEL  
 INNER – MIN., .012 THICK, ALUMINUM ALLOY