

SUBMITTAL DRAWING

JOB NAME: _____
 LOCATION: _____
 ARCHITECT: _____
 ENGINEER: _____
 CONTRACTOR: _____

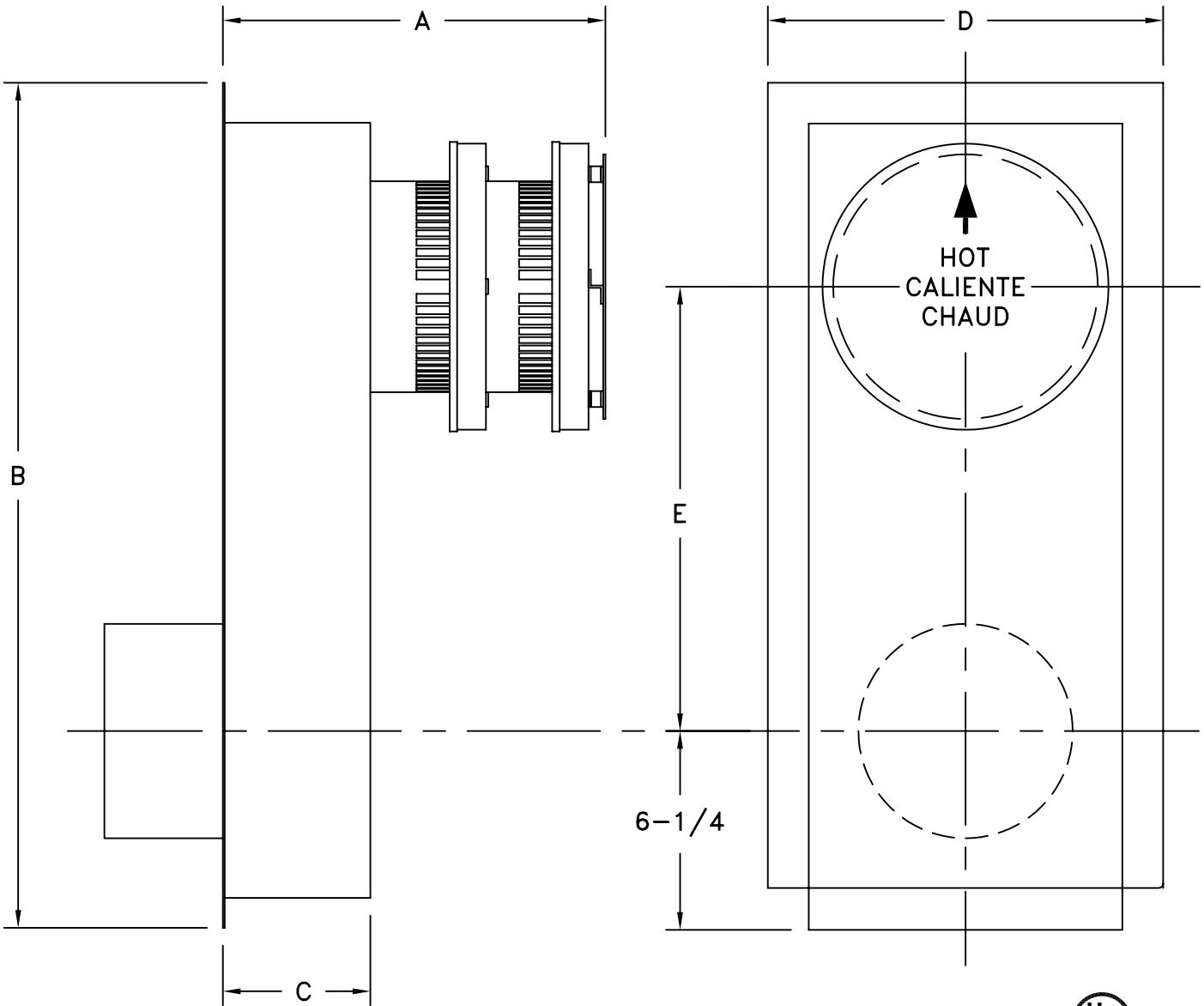
Amerivent Direct Vent

**SNORKEL CAP
 4" & 5" DIAMETERS**

DATE: 05/03/05

SUBMITTED BY: _____

DRAWING #: B7-17



PART NO.	SIZE	DEPTH A	HEIGHT B	DEPTH C	WIDTH D	SPACING E
4D14S	4"X6-5/8"	12"	26-1/2"	4-3/4"	12-1/2"	14"
4D36S	4"X6-5/8"	12"	48-1/2"	4-3/4"	12-1/2"	36"
5D14S	5"X8"	14-1/2"	26-1/2"	6-1/2"	14-1/2"	14"
5D36S	5"X8"	14-1/2"	48-1/2"	6-1/2"	14-1/2"	36"

- MATERIAL
 OUTER PIPE - MIN., .018 THICK, GALVANIZED STEEL
 INNER PIPE - MIN., .012 THICK, TYPE 430 STAINLESS STEEL